

THE HARMFUL EFFECTS OF WOOD SMOKE AND THE GROWTH OF RECREATIONAL WOOD BURNING



barbecue



chiminea



fire pit



pizza oven

ENVIRONMENT & HUMAN HEALTH, INC.

THE HARMFUL EFFECTS OF
WOOD SMOKE
AND THE GROWTH OF
RECREATIONAL WOOD BURNING

*Research and publication of this report
was made possible by a grant from
The Heinz Endowments.*



ENVIRONMENT & HUMAN HEALTH, INC.

1191 Ridge Road • North Haven, CT 06473

Phone: (203) 248-6582 • info@ehhi.org

www.ehhi.org

THE HARMFUL EFFECTS OF WOOD SMOKE AND

ENVIRONMENT AND HUMAN HEALTH, INC.

Board Members

Susan S. Addiss, MPH, MURs. Past Commissioner of Health for the State of Connecticut; Past President of the American Public Health Association; Past President of the Connecticut Public Health Association.

Nancy O. Alderman, MES. President of Environment and Human Health, Inc.; Past member of the National Board of Environmental Defense; Recipient of the Connecticut Bar Association, Environmental Law Section's Clyde Fisher Award; and the New England Public Health Association's Robert C. Huestis/Eric Mood Award for outstanding contributions to public health in the environmental health area.

Andrea Gottsegan Asnes, MD, MSW. Associate Professor of Pediatrics at the Yale School of Medicine; Associate Director of the Yale Child Abuse Programs and Child Abuse Prevention Programs; Co-Director of the third year clerkship in Pediatrics; Associate Director of the MD/PhD Program.

Gaboury Benoit, PhD. Grinstein Professor of Environmental Chemistry at Yale University's School of Forestry and Environmental Studies; Director of the Hixon Center for Urban Ecology. Co-author of *The Land and Natural Development (L.A.N.D.) Code* and *New Strategies for America's Watersheds*.

D. Barry Boyd, MD. Clinical Professor of Medicine, Yale University School of Medicine; Oncologist at Greenwich Hospital and Affiliate Member of the Yale Cancer Center; Founder and Director of Integrative Medicine at Greenwich Hospital – Yale Health System.

David R. Brown, ScD. Public Health Toxicologist and Director of Public Health Toxicology for Environment and Human Health, Inc.; Past Chief of Environmental Epidemiology and Occupational Health at Connecticut's Department of Health; Past Deputy Director of The Public Health Practice Group of ATSDR at the National Centers for Disease Control and Prevention (CDC) in Atlanta, Georgia.

Thomas F. Harrison, Esq. Connecticut Environmental Lawyer; Past Assistant Attorney General in the New York State's Attorney General's office; Past Regional Counsel in the largest U.S. EPA Office, Region 5; Past Senior Corporate Council to the B.F. Goodrich Company; Past Partner at the Hartford law firm of Day Pitney LLP; Past Chairman of the Environmental Section of the Connecticut Bar Association.

Pinar H. Kodaman, MD, PhD. Assistant Professor of Obstetrics, Gynecology, and Reproductive Sciences, Division of Reproductive Endocrinology and Infertility, Yale University School of Medicine; Director of the Early Recurrent Pregnancy Loss Program at the Yale Fertility Center.

Sarah S. Mougalian, MD. Assistant Professor of Medical Oncology with a focus on Breast Medical Oncology, Smilow Cancer Center, Yale University School of Medicine. Recipient of many awards, including the Clifton Howe Award given for clinical excellence to a medical oncology fellow.

Hugh S. Taylor, MD. Anita O'Keeffe Young Professor of Obstetrics, Gynecology, and Reproductive Sciences; Professor of Molecular, Cellular, and Developmental Biology; Chair of Obstetrics, Gynecology, and Reproductive Sciences, Yale School of Medicine; Chief of Obstetrics and Gynecology, Yale-New Haven Hospital.

John P. Wargo, PhD. Tweedy-Ordway Professor of Environmental Health and Political Science at Yale University; Chair, Yale College Environmental Studies Major and Program; author of *Green Intelligence: Creating Environments That Protect Human Health* (Yale Press) and *Our Children's Toxic Legacy*.

THE HARMFUL EFFECTS OF
WOOD SMOKE
AND THE GROWTH OF
RECREATIONAL WOOD BURNING

John Wargo, Ph.D.

Tweedy-Ordway Professor of Environmental Health and Political Science
Yale University

Nancy Alderman, MES

President
ENVIRONMENT AND HUMAN HEALTH, INC.

Linda Wargo, MES

EDITING AND GRAPHIC DESIGN
Jane M. Bradley, MALS
Medical/Science Writer
ENVIRONMENT AND HUMAN HEALTH, INC.

EDITING ASSISTANCE

Susan Addiss, MPH, MURs

EDITOR
ENVIRONMENT AND HUMAN HEALTH, INC.

Copyright © 2018 Environment & Human Health, Inc.

 *Printed on recycled paper with soy-based inks*

THE HARMFUL EFFECTS OF WOOD SMOKE AND

I. Wood Smoke: Introduction	7
II. Components of Wood-Smoke	13
Particulate Matter	14
PM2.5	14
Sources of PM2.5 Pollution	15
PM2.5 Federal Regulations	16
Ultrafine Particles Smaller than PM2.5	17
Polycyclic Aromatic Hydrocarbons (PAHs)	19
Volatile Organic Compounds and Other Organic Contaminants	21
1,3-butadiene	21
Benzene	21
Aldehydes	22
Dioxins	22
III. Health Risks from Wood-Smoke Exposure	23
Lung Diseases	23
Chronic Obstructive Pulmonary Disease (COPD)	23
Asthma	24
Heart Diseases	26
Cancer	28
Lung Cancer	30
Breast Cancer	31
Stomach and Intestinal Cancer from Smoked Foods	33
Diabetes	35
Central Nervous System Effects and Cognitive Decline	36
Mortality	36

THE GROWTH OF RECREATIONAL WOOD BURNING

- Toxicity of Wood Smoke** 37
 - Wood Smoke vs. Other Combustion Sources37
 - Wildfire Smoke Exposures..... 38
 - Cigarette Smoke Inhalation, Both Active and Involuntary..... 39
 - Vehicle Emissions 41
 - Coal Burning42
- Populations at Greatest Risk** 44
 - Pregnant Women, Infants, and Young Children 44
 - Older Adults and Those with Lung and Heart Diseases and Diabetes..... 45
 - Women with Breast Cancer 45
 - Wood-Burning Neighborhoods 46
- IV. Regulating Wood Smoke** 48
- Air Quality Index (AQI) Alerts** 50
- Air Quality Index (AQI) Limitations**..... 52
- Open Burning Regulations** 52
 - Regulations in Allegheny County, Pennsylvania..... 55
 - Regulations in Connecticut 58
- Regulations in San Joaquin Valley, California** 61
- Second-Hand Cigarette Smoke Heavily Regulated, Wood Smoke Lightly Regulated**..... 64
- V. Conclusion** 69
- VI. Recommendations** 69
 - Recommendations for the Federal Government** 69
 - Recommendations for States**..... 70
 - Recommendations for City, Town, and County Governments** 71
 - Recommendations for Individuals** 71

THE HARMFUL EFFECTS OF WOOD SMOKE AND

VII. Glossary	73
----------------------------	----

VIII. Endnotes	74
-----------------------------	----

Tables and Figures

List of Tables

Table 1: Major Hazardous Pollutants in Wood Smoke.....	14
Table 2: National Ambient Air Quality Standards (NAAQS) for PM2.5	17
Table 3: Fine Particles and Cardiovascular Health Effects	27
Table 4: International Agency for Research on Cancer Classifications	28
Table 5: Facts about Diabetes in the United States	35
Table 6: Pollutants in Wood Smoke, Tobacco Smoke, and Diesel and Coal Emissions	43
Table 7: EPA's Air Quality Index (AQI) for 24-hour Fine Particle Pollution (PM2.5)	51
Table 8: Residential Open and Recreational Burning Restrictions in Northeast States	54
Table 9: Milestones in Establishing Second-Hand Smoke Policies in the U.S.	66

List of Figures

Figure 1: PM Size Comparison	15
Figure 2: Asthma Triggers	25
Figure 3: Smoked Foods: Cancer Risks	34
Figure 4: Health Effects Linked to Second-hand Smoke Exposure	40
Figure 5: PM2.5 Levels Measured Inside A Home Near A Wood-Burning Fire Pit in British Columbia.....	47
Figure 6: Increase in Homes Using Wood as Main Heating Source (2005-2012).....	49
Figure 7: Relative Emissions of Fine Particles	50
Figure 8: Air Quality Index for PM2.5 in 2016 in Pittsburgh, PA	56
Figure 9: Air Quality Monitors in Connecticut	59
Figure 10: San Joaquin Valley PM 2.5 Reduction	62

I. Wood Smoke: Introduction



- Wood smoke poses a serious danger to human health. It is known to cause and exacerbate many pulmonary and cardiovascular diseases, and these illnesses are the primary causes of mortality in the U.S.
- Despite convincing scientific evidence of health hazards, most governments have failed to effectively regulate wood burning, and wood smoke now constitutes nearly 30% of airborne particle pollution in a number of urban areas during winter months.
- Human exposure to wood smoke appears to be increasing, as more people are burning wood within or near their homes. The use of wood for heating purposes increases along with fossil fuel prices, especially in forested parts of the country where wood is both accessible and inexpensive.
- During the past 25 years, outdoor residential fireplaces, fire pits, chimineas, cooking appliances, and wood boilers (used in the summer only to produce hot water and heat swimming pools) have become increasingly common. The dynamics of the exchange

During the past 25 years, outdoor residential fireplaces, fire pits, chimineas, cooking appliances, and outdoor wood boilers (used in the summer to produce only hot water and heat swimming pools) have become increasingly common.

THE HARMFUL EFFECTS OF WOOD SMOKE AND



Emissions from wood burning, diesel fuel combustion, coal power plants, and cigarettes contain remarkably similar chemicals.

of wood smoke from outdoor burning with indoor concentrations of particulates and gases is misunderstood.

- The ability of very fine particles and gases to enter indoor environments from outdoor burning sources is well documented, and dependent upon indoor-outdoor air exchange rates. This means that those who routinely burn wood should be vigilant that they are not polluting their indoor environments to dangerous levels.
- Emissions from wood burning, diesel fuel combustion, coal power plants, and cigarettes contain remarkably similar chemicals. For areas already out of federal compliance with pollution limits from other sources of particles and volatile organic compounds, the additional contribution of wood smoke can produce dangerous conditions.
- Wood smoke from a single source normally creates a plume of visible pollution, also identifiable by its sweetness of smell. Satellite imagery with extraordinary sensitivity can easily track wood smoke many miles from its origin, along with the buildup of haze under still conditions near the source. If the source is within or near an urban block, condominium or townhouse cluster, hundreds of people may be exposed to elevated levels of particles and gases that can diminish lung function and threaten health.
- The U.S. Environmental Protection Agency has primary federal responsibility to regulate air quality, yet this agency has long-neglected the wood-burning problem, leaving it to state, local, and municipal governments.
- This disregard has led to a patchwork quilt of largely ineffective regulation by lower levels of government, and many communities have no health-protective requirements at all. Poorly funded state and local health departments are often responsible for establishing and regulating wood smoke emissions. Many expect the federal government to establish health-protective standards. When the federal government fails to do so, states and local governments must assume the responsibility as an “unfunded mandate.”

THE GROWTH OF RECREATIONAL WOOD BURNING

- Effective regulation might focus on appliance emission standards; maximum health-protective air pollution levels of particles and gases at the user's property boundary; a maximum number of wood-burning devices allowable within buildings, neighborhoods, or cities; and prohibitions against burning during still weather conditions when air pollution can increase rapidly near the ground. The absence of effective legal protection leaves most individuals to fend for themselves in attempts to persuade neighbors to use cleaner sources of fuel such as natural gas, and more efficient burning appliances for heating and cooking, both indoors and outdoors.
- There is some good news. Mandatory wood smoke reduction programs in California have resulted in significant reductions in ambient PM_{2.5} concentrations and a decrease in measured health effects. This is consistent with a large body of data demonstrating that as particulate air pollution declines, public health improves.¹ A number of state and local governments have prohibited burning during still weather patterns, or certain times of the day.
- Decades of research demonstrate that particles with a diameter of 2.5 micrometers or less can enter the respiratory tract. Small particles created by burning wood remain airborne for longer periods of time than larger particles, meaning that they remain available for human inhalation. Small particles can have a strongly negative effect on human health, causing and exacerbating lung diseases, triggering cardiovascular events, cancers, and premature deaths. Health loss can occur at air pollution levels well below regulatory standards.
- **Long-term exposure** is associated with reduced lung function, chronic bronchitis, and even premature death.² Long-term exposure to fine particles (PM_{2.5}) is linked to atherosclerosis (a condition that underlies many cardiovascular diseases), adverse birth outcomes, and childhood respiratory diseases. Additional studies suggest that long-term exposure to PM_{2.5} also increases risks of diabetes, neurodevelopmental abnormalities, and diminished cognitive function.³ Lung cancer is also a risk of long-term exposure to wood smoke.⁴



Small particles can have a strongly negative effect on human health, causing and exacerbating lung diseases, triggering cardiovascular events, cancers, and premature deaths. Health loss can occur at air pollution levels well below regulatory standards.

THE HARMFUL EFFECTS OF WOOD SMOKE AND



Outdoor fireplaces can cause dangerous exposures, especially under still, damp conditions and temperature inversions when smoke continues to concentrate near the ground.

- **Short-term exposure** to wood smoke aggravates many types of lung diseases, can cause asthma attacks and acute bronchitis, and may increase susceptibility to respiratory infections.
- Low-level exposure to wood smoke, regardless of its origin, can reduce pulmonary function and lower blood oxygen concentrations. Recent studies show reduced lung function later in life following childhood exposure to wildfire smoke.⁵ Studies also show a higher incidence of breast cancer in women who burn synthetic wood,⁶ and shortened lifespans in women with breast cancer who are exposed to fine particles found in wood smoke.⁷
- Short- and long-term exposures to PM2.5 decrease life expectancy.⁸ A 2017 study of more than 60 million U.S. Medicare beneficiaries found that, for every increase in pollution concentration of 10 $\mu\text{g}/\text{m}^3$ in outdoor PM2.5 (measured as an annual average), mortality increased by 7%. The study included populations from small cities and rural areas. The authors reported that long-term exposure to PM2.5 is associated with an increased risk of death, even at levels below the current regulatory standards.⁹
- The burning of firewood and trash is one of the largest contributors to PM2.5 in many rural, semi-rural, and suburban communities in the U.S.
- Outdoor fireplaces can cause dangerous exposures, especially under still, damp conditions and temperature inversions when smoke continues to concentrate near the ground.
- The history of second-hand cigarette smoke regulation demonstrates that local and state policy efforts are likely to be more successful than federal initiatives. Local and state regulations raised public awareness regarding the health risks of second-hand smoke to non-smokers, increasing support for policy measures to reduce these risks, and changing attitudes and norms regarding the social acceptability of smoking.

THE GROWTH OF RECREATIONAL WOOD BURNING



- Local burn-free zones, especially in densely populated environments, could dramatically reduce pollution, exposures and health risks. Wood burning in most societies is viewed as a natural practice to create heat, light, cook food, heat water, and provide a sense of security. Fireplaces, woodstoves, and both indoor and outdoor cooking appliances are often the center of social life and relaxation.
- Wood burning in residential settings has long enjoyed a positive cultural image in the public mind. This favorable impression was reinforced during recent decades of fossil fuel price increases, and by consumer perception that wood burning is both natural and environmentally sustainable.
- The growing scientific consensus that wood smoke causes serious and widespread human illness is disbelieved by many who rely on wood burning for heat or its social comforts at relatively small costs compared with fossil fuels. They believe they have a legitimate right to continue a traditional and natural practice spanning thousands of years. Customary or traditional patterns of wood burning help to explain constituents' resistance to new regulations, and legislators are especially sensitive to their constituents' concerns.

Wood-burning in most societies is viewed as a natural practice to create heat, light, cook food, heat water, and provide a sense of security. Fireplaces, woodstoves, and both indoor and outdoor cooking appliances are often the center of social life and relaxation.

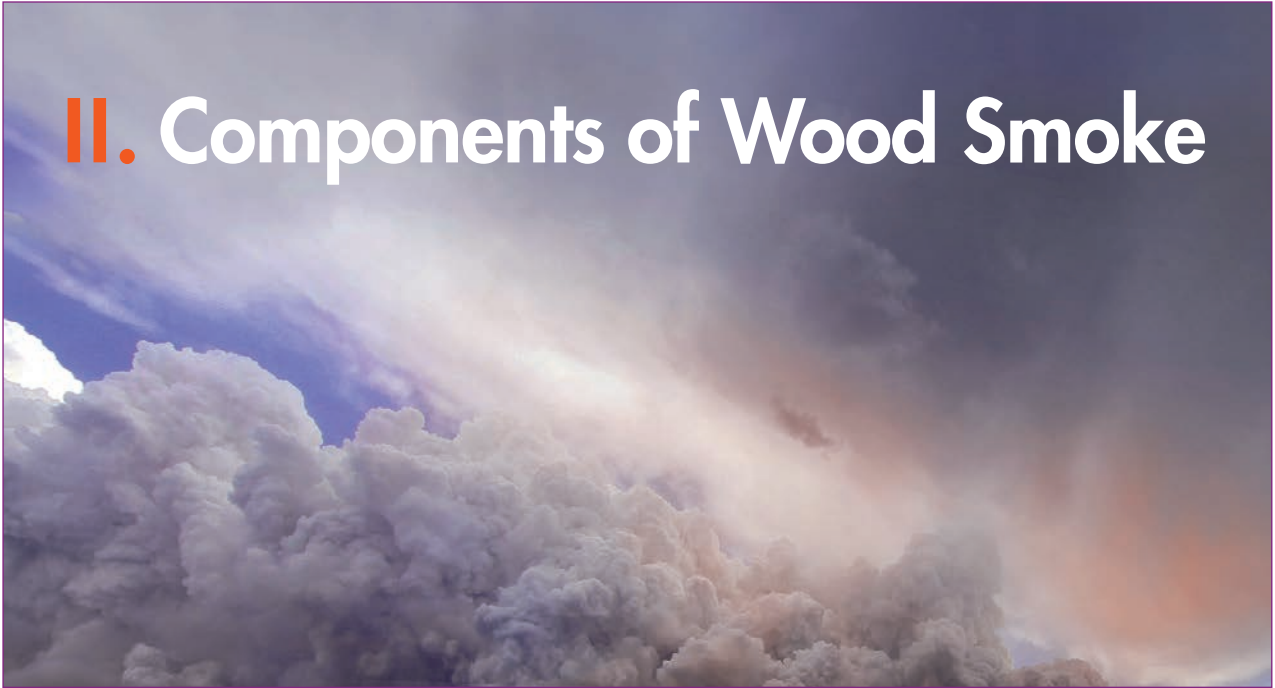
THE HARMFUL EFFECTS OF WOOD SMOKE AND



The report explores efforts in Allegheny County, Pennsylvania,, and in Connecticut to control wood-smoke exposures. It is important to note that Allegheny County has some of the highest levels of particulate air pollution in the U.S.

- This report provides an extensive review of the health effects associated with human exposure to wood smoke. At the present time, there are no accurate estimates of the current number of appliances, frequency of use, or amount of wood burned by geographic location because the data do not exist.
- This report examines state and local government efforts to reduce wood-smoke emissions. As examples, the report explores efforts in Allegheny County, Pennsylvania, and in Connecticut to control wood-smoke exposures. It is important to note that Allegheny County has some of the highest levels of particulate air pollution in the U.S. The report ends with recommendations to reduce exposures from wood-smoke emissions for all levels of government, as well as for individuals.
- The research presented in this report concludes that the health risks associated with wood-smoke exposure are serious. Finally, the report suggests a variety of policy and behavioral changes that could significantly reduce human exposures and health loss from inhaling wood smoke.

II. Components of Wood Smoke



- Wood smoke contains thousands of chemicals, many with documented adverse human health effects. Chemicals include gases such as carbon monoxide (CO), nitrogen dioxide (NO₂), and ozone (O₃). Wood smoke contains particulate matter (PM) and toxic air pollutants, including benzene, formaldehyde, acrolein and polycyclic aromatic hydrocarbons (PAHs).
- The specific chemicals in wood smoke depend on the type of burning appliance, whether wood stove, fireplace, or fire pit. Other factors include the burn rate, type of wood, and moisture content. The appliance used and type of wood burned have the largest effect on the composition of emissions from wood combustion.¹⁰
- Components of wood smoke include at least five chemical groups classified as known human carcinogens by the International Agency for Research on Cancer (IARC). Wood smoke contains additional chemicals categorized by IARC as probable or possible human

Components of wood smoke include at least five chemical groups classified as known human carcinogens by the International Agency for Research on Cancer (IARC). Wood smoke contains additional chemicals categorized by IARC as probable or possible human carcinogens, and at least 26 chemicals listed by the USEPA as hazardous air pollutants.

THE HARMFUL EFFECTS OF WOOD SMOKE AND

carcinogens, and at least 26 chemicals listed by the USEPA as hazardous air pollutants.¹¹

- The chemical composition of wood smoke is extremely complex.¹² Table 1 lists a handful of the chemicals of concern found in wood smoke that have been linked to cardiovascular and pulmonary diseases, immune system disorders, cancer and/or other diseases.

Table 1: Major Hazardous Pollutants in Wood Smoke

Compound	Cardiovascular	Pulmonary	Cancer	Immune	Other
1,3 butadiene*			•		•
PAHs (20+)*			•		
Benzene*			•		•
Acrolein*	•	•	?	•	
Formaldehyde*			•		
Dioxin			•		
Particulate Matter	•	•			

*Hazardous Air Pollutant

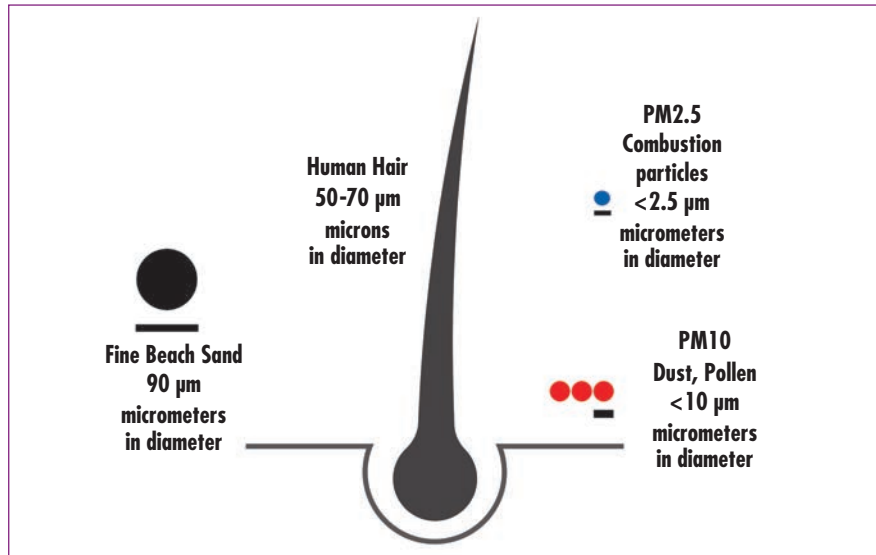
Particulate Matter

- Particulate matter, or PM, is a mixture of solid and liquid droplets suspended in the air. PM is regulated according to size by the National Ambient Air Quality Standards (NAAQS) set by USEPA.
- PM10 consists of coarse particles smaller than 10 µm in diameter, while PM2.5 is made up of finer particles that are generally 2.5 µm or smaller in diameter. Ultrafine particles, or UFP, are not currently regulated by USEPA and have diameters less than 0.1 µm.

PM2.5

- Fine particles are so small they can pass through the nose and throat and enter the lungs. Once inhaled, these fine particles can cause serious health effects, especially to those with heart or lung

Figure 1: PM Size Comparison



Source: <https://www.airnow.gov/index.cfm?action=aqibasics.particle>

diseases. Children, older adults and people with diabetes are also affected by fine particles.

- Researchers at Harvard found that both short- and long-term exposure¹³ to PM2.5 was associated with mortality at levels below current standards.¹⁴

Sources of PM2.5 Pollution

- Burning firewood and trash are among the largest sources of fine particle pollution in many parts of the country.¹⁵ According to USEPA, residential wood smoke contributes more than 345,000 tons of PM2.5 into the air throughout the country each year.¹⁶
- A recent study in the northwest U.S. found that residential wood burning was responsible for 31% of PM2.5 in Seattle; for 58% in Portland; for 86% in Klamath Falls; and for 92.7% in Lakeview, Oregon. At 10 monitoring sites in the study, the average December and January contribution of residential wood burning to PM2.5



Burning firewood and trash are among the largest sources of fine particle pollution in many parts of the country.

THE HARMFUL EFFECTS OF WOOD SMOKE AND



Wood burning emits about four times the amount of PM2.5 than all the region's power plants in Southern California combined.

levels ranged from 11.4% to 92.7%. The highest percentages of wood smoke PM2.5 occurred in smaller towns where there were fewer other sources of PM2.5.¹⁷

- In Connecticut, wood smoke particulate matter has been found to contribute as much as 100% of the hourly and 74% of the daily contribution to the total PM2.5.¹⁸ In Westport, Connecticut, wood heating contributes 69% of PM2.5 in the fall.¹⁹
- A study of five rural Montana valley communities found that residential wood stoves were the largest source of PM2.5, ranging from 56% to 77% of measured wintertime PM2.5 pollution.²⁰
- Wood burning is the largest source of annual PM2.5 pollution in the San Francisco Bay Area, contributing 25% of the area's PM2.5 pollution, followed by exhaust from gasoline vehicles (14%) and diesel vehicles (8%).
- On one street in Atlanta, Georgia, residential wood burning contributes an average of 50% of particulate emissions in winter, compared to an average of 33% for gasoline vehicles. Wood burning emits about four times the amount of PM2.5 as all of the Southern California region's power plants combined.²¹

PM2.5 Federal Regulations

- The Clean Air Act requires USEPA to set National Ambient Air Quality Standards (NAAQS) for pollutants considered harmful to public health and the environment.
- The NAAQS were established for PM2.5 in 1997, based on evidence that fine particle pollution can cause premature deaths, as well as harmful effects on the cardiovascular and respiratory systems. The current primary annual NAAQS for PM2.5 is 12 $\mu\text{g}/\text{m}^3$ and the 24-hour NAAQS is 35 $\mu\text{g}/\text{m}^3$ (see Table 2).²²

THE GROWTH OF RECREATIONAL WOOD BURNING

Table 2: National Ambient Air Quality Standards for PM2.5

Date	Primary/Secondary	Averaging Time	Level $\mu\text{g}/\text{m}^3$	Calculation
1997	Primary and Secondary	24-hour	65	98th percentile, averaged over 3 years
1997	Primary and Secondary	Annual	15	Annual arithmetic mean, averaged over 3 years
2006	Primary and Secondary	24-hour	35	98th percentile, averaged over 3 years
2006	Primary and Secondary	Annual	15	Annual arithmetic mean, averaged over 3 years
2012	Primary	Annual	12	Annual arithmetic mean, averaged over 3 years
2012	Secondary	Annual	15	Annual arithmetic mean, averaged over 3 years
2012	Primary and Secondary	24-hour	35	98th percentile, averaged over 3 years

Note: Primary standards protect public health, including the health of sensitive populations, such as asthmatics, children, and older adults. Secondary standards protect the public welfare, including protection against decreased visibility and damage to animals, crops, vegetation, and buildings.

“Small particulate pollution [has] health impacts even at very low concentrations — indeed no threshold has been identified below which no damage to health is observed.”

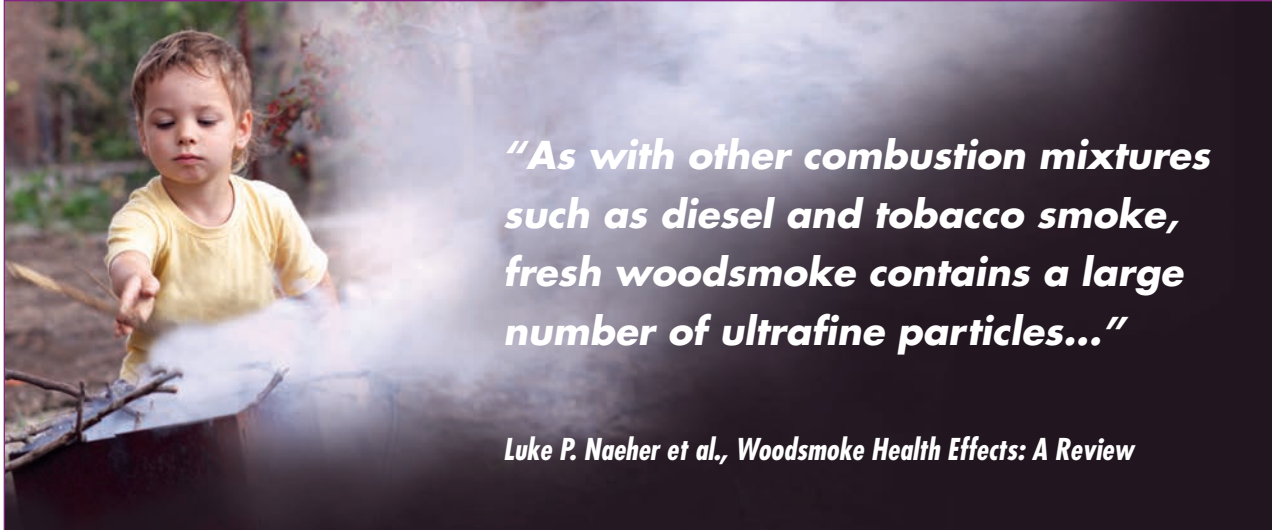
Source: <http://www.who.int/mediacentre/factsheets/fs313/en/>

- Although USEPA has set regulatory standards for PM2.5, recent data suggest that there is no safe level of exposure.²³ A study of over 300,000 people in nine European countries found some lung cancer risk at every level of particulate matter and confirmed that the higher the PM level, the greater the risk. Every increase of five $\mu\text{g}/\text{m}^3$ of PM2.5 drove the risk of lung cancer up by 18%.²⁴

Ultrafine Particles Smaller than PM2.5

- Wood smoke contains ultrafine particles that may be even more dangerous than PM2.5. These ultrafine particles (UFPs) penetrate deep into the respiratory tract, and have not only been detected in the lungs, but also in the liver, kidneys, heart, and brain.²⁵

THE HARMFUL EFFECTS OF WOOD SMOKE AND



“As with other combustion mixtures such as diesel and tobacco smoke, fresh woodsmoke contains a large number of ultrafine particles...”

Luke P. Naeher et al., Woodsmoke Health Effects: A Review

Wood smoke contains ultrafine particles (UFPs) that may be even more dangerous than PM2.5. These particles penetrate deep into the respiratory tract, and have not only been detected in the lungs but also in the liver, kidney, heart, and brain.

- The effects of ultrafine particles on the respiratory system are not well studied,²⁶ but a recent review suggests a causal relationship between short-term exposures to UFPs and cardiovascular and respiratory effects, including changes in lung function and pulmonary inflammation.²⁷
- The ultrafine component of PM might be responsible for many observed health effects of PM2.5 and PM10 for three reasons: (1) their small diameter enables UFPs to penetrate deep into the lungs more easily than larger particles; (2) UFPs are cleared less efficiently from the respiratory tract than larger particles and are transported from the lungs to the bloodstream and into other organ systems; and (3) UFPs have a greater surface area compared to larger particles, thus providing a larger area of potentially toxic chemicals or metals to be absorbed by the lungs and other organs.²⁸
- UFPs are not regulated as criteria pollutants, and are therefore not monitored at most air pollution monitoring stations in the U.S. Without a national network of UFP monitors to assess UFP ambient concentrations in the U.S., little is known about ambient UFP concentrations, and important information is lacking to support health studies.²⁹

Polycyclic Aromatic Hydrocarbons (PAHs)

- PAHs are constituents of fine particles³⁰ produced from incomplete combustion of organic materials. Natural sources of PAHs include wildfires and volcanos, while man-made sources of PAHs sources are smoke, automobile emissions, and cigarette smoke.
- Regions of the country with dense use of wood stoves and fire-places have elevated levels of PAHs in ambient air.³¹ The American Conference of Governmental Industrial Hygienists (ACGIH) has concluded that breathing smoke from open fireplaces is a major route of exposure to PAHs for the general population.³²
- Residential wood burning is the largest source of PAHs in the U.S.³³ Factors that influence emissions of PAHs include the type of wood burned, as well as combustion conditions such as temperature, moisture, availability of oxygen, and completeness of combustion.³⁴
- Higher PAH emissions from wood burning have been found at higher wind speed and lower flaming rate. Smoldering combustion is estimated to emit up to five times more PAHs than flaming combustion.³⁵
- PAHs are regulated as Hazardous Air Pollutants (HAPs), and seven PAHs are classified as probable human carcinogens.³⁶ They are benzo[a]pyrene, benz[a]anthracene, chrysene, benzo[b]-fluoranthene, benzo[k]fluoranthene, dibenz[a,h]anthracene, and indeno[1,2,3-cd]pyrene.
- The carcinogenic effects of PAHs are due to their ability to bind to DNA. Many studies show a correlation between levels of PAH-DNA adduct formation in different organs and PAH doses.³⁷ A DNA adduct is a segment of DNA bound to a cancer-causing chemical. This process could be the start of a cancerous cell, or carcinogenesis.



PAHs are constituents of fine particles produced from incomplete combustion of organic materials. Natural sources of PAHs include wildfires and volcanos, while man-made sources of PAHs sources are smoke, automobile emissions, and cigarette smoke.

THE HARMFUL EFFECTS OF WOOD SMOKE AND



Today, synthetic logs are manufactured from nut shells, fruit pits, coffee grounds, paper, plant oils, and small amounts of various chemicals that may be blended with biowax, a vegetable paraffin, made from soy or palm oil or wood resins. Petroleum-based paraffin wax is still the most common wax used in synthetic logs.

- Several studies report that higher PAH levels and a wider range of specific PAH compounds are found in synthetic log emissions compared to real wood emissions.³⁸
- Higher concentrations of chrysene, a documented tumorigenic PAH, have also been found in synthetic log emissions.³⁹ A study of the organic compounds emitted in smoke from burning pine, oak, and synthetic logs in residential fireplaces in the Los Angeles area showed that the smoke from synthetic logs had the highest total PAH emission rate and the most diverse types of PAHs.⁴⁰
- Manufacturers of synthetic logs claim that their logs emit fewer PAHs than wood. Duraflame[®], the leader in the synthetic log market,⁴¹ says its logs produce “80 percent less emissions than a typical wood fire.”⁴² They cite an 11-year-old study that found lower levels of PM and PAHs in synthetic wood logs.⁴³ The manufacturer of Goodwood All-Wood Firelogs, which are made of wood chips, shavings and sawdust without the use of petroleum or chemical binders, claims that its products emit 25-50% fewer particulates than regular firewood.⁴⁴
- Petroleum-based synthetic logs have been on the market since the 1960s, when Duraflame[®] created a fire log by blending sawdust with petroleum wax. Today, synthetic logs are also manufactured from nut shells, fruit pits, coffee grounds, paper, plant oils, and small amounts of various chemicals that may be blended with biowax, a vegetable paraffin, made from soy or palm oil or wood resins. However, petroleum-based paraffin wax is still the most common wax used in synthetic logs.
- Both the burning of real wood and synthetic logs are sources of PAH exposure. Research published in 2014 showed that women who burn synthetic logs over many years are more likely to have breast cancer than those who do not burn them. The women who burned synthetic logs and developed breast cancer were more likely to have at least two genetic variants. The authors of the

study argue that the increase in breast cancer risk observed with synthetic log burning may be biologically plausible, citing reports documenting higher levels of certain PAHs in synthetic logs.⁴⁵

VOCs and Other Organic Contaminants

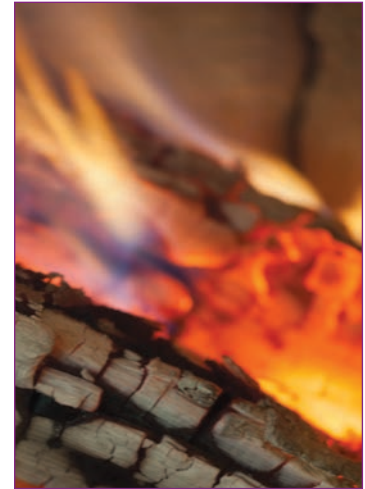
- Wood smoke contains numerous volatile organic compounds (VOCs) and organic contaminants.

1,3-butadiene

- Sources of 1,3-butadiene include industry emissions, cigarette smoke, wood smoke, and the smoke of wood fires. The International Agency for Research on Cancer (IARC), the National Toxicology Program (NTP), and the USEPA all classify 1,3-butadiene as a human carcinogen.
- Wood burning has been found to increase personal exposure to 1,3-butadiene, as well as indoor levels of 1,3-butadiene. The type of wood-burning appliance and burning time are significant factors for indoor levels of 1,3-butadiene. The Agency for Toxic Substances and Disease Registry (ATSDR) recommends reducing the risk of exposure to 1,3-butadiene by minimizing the amount of smoke released during wood burning.⁴⁶

Benzene

- Benzene, a major component of wood smoke, is regulated as a hazardous air pollutant. Benzene is a known human carcinogen, classified as Group 1 by the IARC. In occupational settings, long-term inhalation exposure to benzene can cause various disorders in the blood, including reduced numbers of red blood cells and aplastic anemia.
- Reproductive effects have been reported for women exposed to high levels of benzene by inhalation. Adverse effects on the developing fetus have been observed in animal tests.⁴⁷ Domestic wood burning contributes to indoor levels of benzene, especially



Benzene, a major component of wood smoke, is regulated as a hazardous air pollutant. Benzene is a known human carcinogen, classified as Group 1 by the IARC.

THE HARMFUL EFFECTS OF WOOD SMOKE AND

from inefficient flame combustion.⁴⁸ Hardwood burned in a wood stove emits one gram of benzene per kg of wood burned,⁴⁹ and even higher levels of benzene have been found inside wood-burning homes.⁵⁰ In Klamath Falls, Oregon, wood stoves are estimated to emit eight tons of benzene during the wood-burning season.⁵¹



Formaldehyde is linked to throat, nose, and blood cancers. People with asthma may be more sensitive to exposure to formaldehyde and repeated prolonged exposures have been linked to asthma attacks.

Aldehydes

- Aldehydes in wood smoke include acetaldehyde, a probable carcinogen, formaldehyde, a probable human carcinogen, and acrolein, a lung cancer agent.⁵² Formaldehyde is linked to throat, nose, and blood cancers.⁵³ People with asthma may be more sensitive to exposure to formaldehyde,⁵⁴ and repeated prolonged exposures have been linked to asthma attacks.⁵⁵
- Acrolein damages and inhibits DNA repair in lung cells; it interferes with the immune response in the respiratory tract;⁵⁶ is associated with increased cardiovascular disease;⁵⁷ and it suppresses the immune system.⁵⁸ Acrolein is implicated in demyelinating diseases such as multiple sclerosis.⁵⁹ Demyelinating diseases are diseases of the nervous system in which the myelin sheath of neurons is damaged.

Dioxins

- Dioxins are extremely toxic, mutagenic, and linked to the suppression of the human immune system. Dioxins are persistent, toxic and bio-accumulative chemicals and are transported over long distances from the source of emission. Forest fires, backyard trash burning, and medical waste incinerators are the top three air sources of dioxin emissions in the U.S.⁶⁰
- In the San Francisco Bay region, emissions from woodstoves and fireplaces contribute up to 40% of the dioxins emitted into the air.⁶¹ In Fresno, California, wood burning was shown to be the primary source of dioxins in the environment.⁶² If wood with preservatives is burned in domestic stoves and fires, studies have found a significant increase in dioxin formation.⁶³



III. Health Risks from Wood-Smoke Exposure

- Wood smoke produces fine and ultrafine particulate matter and many different volatile gases. Inhaling fine particles can induce and exacerbate lung diseases including asthma, as well as diseases of the brain and cardiovascular system.
- Fine particle air pollution is often from multiple sources, but in many regions in the U.S., wood burning is the single largest source during colder months.

Fine particle air pollution is often from multiple sources, but in many regions in the U.S., wood burning is the single largest source during colder months.

Lung Diseases

Chronic Obstructive Pulmonary Disease (COPD)

- COPD is a leading cause of illness and mortality worldwide.⁶⁴ While smoking has been associated with risk of COPD since the 1950s,⁶⁵ results from a growing number of published studies demonstrate that risk factors other than smoking are strongly associated with COPD, including both indoor and outdoor pollutants.
- Studies show that COPD is common among those who have never smoked. Worldwide, between 25% and 45% of patients with COPD have never smoked.⁶⁶

THE HARMFUL EFFECTS OF WOOD SMOKE AND



Studies show that COPD is common among those who have never smoked. Worldwide, between 25% and 45% of patients with COPD have never smoked.

- Wood-smoke exposure in the U.S. is associated with a risk of developing COPD.⁶⁷ Among women and smokers exposed to wood smoke, the prevalence of COPD is especially high, and the risk of developing the disease is significantly increased.⁶⁸
- The prevalence of COPD in individuals exposed to wood smoke increases significantly as the duration of wood-smoke exposure lengthens. Researchers recently suggested that wood-smoke COPD should be considered a distinct disease.⁶⁹ COPD associated with wood-smoke exposure (W-COPD) differs from COPD associated with tobacco smoking (T-COPD) and is related to obstruction of the airways, rather than emphysema.⁷⁰

Asthma

- Breathing smoke from wood-burning devices can cause asthma attacks and other respiratory illnesses.⁷¹ The Centers for Disease Control and Prevention (CDC) estimate that 24 million people (8%) in the U.S. have asthma.⁷² It is one of the most prevalent chronic diseases among children worldwide.⁷³
- Fine particulate matter is a risk factor for worsened asthma⁷⁴ and has been associated with higher morbidity and mortality in patients

Figure 2: Asthma Triggers

Smoke Triggers Asthma

According to the American Lung Association, exposure to any type of smoke – cigarette, cigar, secondhand smoke, wood, coal, leaf burning, and/or kitchen smoke can all irritate the lungs.



with asthma.⁷⁵ Wood smoke, in particular, exacerbates asthma symptoms with higher rates of asthma in areas where wood burning takes place over a sustained period.⁷⁶

- A study of children with mild asthma reported associations between measures of airway inflammation and decreased lung function with measures of increased wood-smoke exposure.⁷⁷ Exposure to particulate matter (PM) increases the risk of developing asthma, and even low levels of PM_{2.5} exposure increase asthma symptoms.
- A large nationwide study found an association between air pollution and an increased risk of asthma symptoms in non-asthmatic women and an association with asthma development in women.⁷⁸ Also found was an association between air pollution and the development of asthma in that group.⁷⁹
- Physicians managing asthma recognize that exposure to wood smoke, indoors or outdoors, can narrow airways and cause asthma to flare up, but many patients are unaware of the relationship between wood smoke and asthma. Asthma experts consider smoke from campfires to be among the “surprising” allergy triggers.⁸⁰

A large nationwide study found an association between air pollution and an increased risk of asthma symptoms in non-asthmatic women. Also found was an association between air pollution and the development of asthma in that group.

THE HARMFUL EFFECTS OF WOOD SMOKE AND



Reducing exposure to fine particle pollution has been shown to be associated with decreases in cardiovascular mortality, yet over 90% of patients with cardiovascular disease are not informed of health risks related to fine particle pollution.

Heart Diseases

- Cardiovascular disease accounts for the greatest number of deaths in the U.S. One in three Americans has heart or blood vessel disease.
- Both short-term and long-term exposures to increased concentrations of fine particle pollution increase the risk of cardiovascular mortality and decrease life expectancy.
- Reducing exposure to fine particle pollution has been shown to be associated with decreases in cardiovascular mortality, yet over 90% of patients with cardiovascular disease are not informed of health risks related to fine particle pollution.
- For a person with cardiovascular disease, exposure to unhealthy levels of particle pollution can cause serious problems, including heart attacks, in a short period of time.⁸¹ Exposure to fine and ultrafine combustion-derived PM is well-recognized as a risk factor for cardiovascular disease.⁸²

Table 3: Fine Particles and Cardiovascular Health Effects

Cardiovascular mortality
Ischemic stroke
Acute coronary syndrome
Exacerbation of heart failure
Increased ventricular arrhythmias
Systemic blood pressure elevation

Source: USEPA. <https://www.epa.gov/particle-pollution-and-your-patients-health/course-outlinekey-points>

- Burning wood smoke produces fine particles and increases the risk for heart attacks, strokes, heart disease, and congestive heart failure.⁸³ Numerous epidemiologic and observational studies document effects of fine particles on the cardiovascular system in populations.⁸⁴
- The American Heart Association warns that even very short-term exposure to PM2.5 (a few hours to weeks) can trigger cardiovascular disease–related mortality and nonfatal events (e.g., heart attacks, heart failure, arrhythmias, and strokes).⁸⁵
- Research on populations exposed to wildfire smoke suggests that PM2.5 may act as a triggering factor for acute coronary events during wildfire episodes.⁸⁶
- Studies from across the world have consistently shown that long-term exposures to fine PM are associated with myocardial ischemia and infarctions, heart failure, arrhythmias, strokes and increased cardiovascular mortality.⁸⁷
- A 2017 study of over 60,000 residents in Hong Kong adds to the evidence base that long-term residential PM2.5 exposure increases the risk of stroke in older people.⁸⁸



Research on populations exposed to wildfire smoke suggests that PM2.5 may act as a triggering factor for acute coronary events during wildfire episodes.

THE HARMFUL EFFECTS OF WOOD SMOKE AND



According to the EPA's most recent National Air Toxics Assessment, residential wood heating accounted for 50% of all "area source" air toxic cancer risks nationwide in 2011.

Cancer

- According to the EPA's most recent National Air Toxics Assessment, residential wood heating accounted for 50% of all "area source" air toxic cancer risks nationwide in 2011. That means that the air toxics from residential wood heating accounted for as much cancer risk as all the other smaller sources that often exist in multiple sites in a community, like gas stations and dry cleaners.⁸⁹
- Cancer classifications by the International Agency for Research on Cancer (IARC) demonstrate the potential for exposure to wood smoke to cause cancer: indoor emissions from household combustion of wood are *probably carcinogenic to humans* (Group 2A);⁹⁰ outdoor air pollution is carcinogenic to humans (Group 1); and PM pollution is carcinogenic to humans (Group 1) and causes lung cancer, with the risk of lung cancer increasing with increased levels of exposure to PM and air pollution.⁹¹

Table 4: IARC Cancer Classifications

Group 1	Carcinogenic to humans
Group 2A	Probably carcinogenic to humans
Group 2B	Possibly carcinogenic to humans
Group 3	Not classifiable as to its carcinogenicity to humans
Group 4	Probably not carcinogenic to humans

Source: <http://monographs.iarc.fr/ENG/Classification/>

- The cancer-causing potential of several polycyclic aromatic hydrocarbons (s) in wood smoke warrant further concern. Benzo[a]pyrene (Group 1), Benz[a]anthracene (Group 2A), and dibenz[a,h]anthracene (Group 2A) are some of the most potent carcinogens detected in wood smoke. Five other PAHs found in wood smoke are also possibly carcinogenic to humans (Group 2B).⁹²

THE GROWTH OF RECREATIONAL WOOD BURNING

- Wood burning is the largest source of PAHs in the U.S.,⁹³ and has been shown to be the top contributor to the air's mutagenicity (likely to cause mutations in DNA, including cancer).
- Levels of B(a)P and several other PAHs are significantly higher (three- to five-fold) in homes with wood combustion appliances compared to homes without them.⁹⁴
- Carcinogenic PAHs have been detected at significant concentrations in a residential neighborhood where wood is burned, contributing 49% of the total PAHs in ambient air.⁹⁵
- Two other IARC Group 1 human carcinogens, 1,3-butadiene and benzene, are detected in wood smoke. Residential wood combustion has been shown to increase personal exposure to 1,3-butadiene as well as indoor levels of 1,3-butadiene and benzene.⁹⁶
- Arsenic, another possible component in wood smoke, is also classified as a Group 1 carcinogen.⁹⁷ Burning wood treated with chromated copper arsenate (CCA) in fireplaces, woodstoves, or trash releases arsenic in smoke and ash.⁹⁸
- In the 1980s, arsenic in wood smoke was found to be the cause of neurological and medical illness in a family of eight people living in rural Wisconsin,⁹⁹ and it has been measured in wood smoke in the ambient air in Seattle.¹⁰⁰
- Open burning of CCA-treated wood has been found to emit the more toxic trivalent form of arsenic in particle sizes that are most respirable.¹⁰¹ CCA was used to protect wood from rot and insects in many residential wood structures for decades, until pressure-treated lumber for most residential uses was phased out at the end of 2003.



Carcinogenic PAHs have been detected at significant concentrations in a residential neighborhood where wood is burned, contributing 49% of the total PAHs in ambient air.



An analysis of seven epidemiologic studies concluded that predominant wood users in North American and European countries experienced higher risk of lung cancer.

Lung Cancer

- Lung cancer is the most common form of cancer in the world and is the number one cancer killer of both men and women in the U.S. Although most lung cancer occurs in smokers, 25% of worldwide lung cancer occurs in those who never smoked.¹⁰²
- Recent studies show increasing rates of lung cancer in people who have never smoked, mostly in females.¹⁰³ There are wide-ranging geographic incidence and risk factors among this group, including asbestos, air pollution, radon, arsenic compounds, cadmium, chromium, ionizing radiation, and wood-smoke exposure.¹⁰⁴
- An association between outdoor air pollution and lung cancer has been suspected for more than a half century. In 2013, IARC classified outdoor air pollution and the PM component of outdoor air pollution as Group 1 carcinogens, based on consistent evidence of an association between the long-term average concentration of PM_{2.5} in outdoor air and lung cancer incidence or mortality.¹⁰⁵ IARC reported that the risk of lung cancer increases as the particle levels rise.¹⁰⁶
- Wood-smoke exposure is considered a risk factor for the development of lung cancer.¹⁰⁷ For decades, studies have found increases in the risk of lung cancer in women who burn wood inside their homes, mostly in poor rural areas,¹⁰⁸ with cancer linked to wood-smoke exposure.¹⁰⁹
- More recently, an analysis of seven epidemiologic studies concluded that predominant wood users in North American and European countries experienced higher risk of lung cancer.¹¹⁰
- Other residues in wood are known to cause lung cancer. Wood dust is a human carcinogen and a risk factor for lung cancer;¹¹¹ wood byproducts such as benzene, 1-butadiene, formaldehyde and acetaldehyde, are well-known carcinogens;¹¹² wood smoke contains PAHs; and the most significant health effect from inhalation exposure to PAHs is an excess risk of lung cancer.¹¹³



Breast Cancer

- A recent and growing body of evidence suggests that exposure to fine and ultrafine particles may be linked to breast cancer. Hundreds of papers support the link between exposures to environmental contaminants and the increasingly high incidence of breast cancer.
- Polycyclic aromatic hydrocarbons (PAHs) are included in a list of a wide variety of toxicants that can lead to increased risk for development of breast cancer. Wood smoke contains PAHs, which have been shown to increase risk for breast cancer through a variety of mechanisms. PAHs have been found to increase breast cancer risk in epidemiological studies.¹¹⁴
- Women are exposed to PAHs from multiple sources, including cigarette smoke, diet, and indoor and outdoor air pollution, but residential wood burning is the most significant source of PAHs in many areas of the world, including the U.S.¹¹⁵
- Like other environmental chemicals associated with breast cancer risk, PAHs are lipophilic and are stored in breast fat tissue.¹¹⁶

A recent and growing body of evidence suggests that exposure to fine and ultrafine particles may be linked to breast cancer. Hundreds of papers support the link between exposures to environmental contaminants and the increasingly high incidence of breast cancer.



The Long Island Breast Cancer Study Project

The Long Island Breast Cancer Study began in 1993, with funding provided by the National Cancer Institute and the National Institute of Environmental Health Sciences (NIEHS). The finding of an association between environmental exposures (including exposure to PAHs) and an increased risk of breast cancer require additional population studies for confirmation.

Decades of epidemiological research suggest that PAHs are linked to breast cancer risk. Like other environmental chemicals associated with breast cancer risk, PAHs are lipophilic and are stored in breast fat tissue.

PAHs can also bind to DNA in breast tissue.¹¹⁷ DNA adducts result when segments of DNA bind to cancer-causing chemicals. PAH-DNA adducts have been associated with breast cancer incidence.¹¹⁸

- The use of an open fireplace has been associated with higher DNA adduct levels,¹¹⁹ which have been related to breast carcinogenesis.¹²⁰ Benzo[a]pyrene (BaP) has been shown to cause breast cancer in rodents,¹²¹ and cumulative BaP contributes to breast cancer metastasis.¹²² The main source of atmospheric BaP in some areas, including the Great Lakes Region, is residential wood burning.¹²³
- Decades of epidemiological research suggest that PAHs are linked to breast cancer risk.¹²⁴ Two recent studies suggest that some types of wood burning may increase this risk.
- Women in the Long Island Breast Cancer Study Project who burned synthetic logs instead of real wood logs in their woodstoves or fireplaces, were more likely to have breast cancer than those who did not burn synthetic logs.

- Most affected were women who burned synthetic logs in their home for more than seven years and those with genetic variations that may make them more susceptible to PAHs.¹²⁵ Women with the highest level of PAH-DNA adducts had a 50% increased risk of breast cancer.¹²⁶
- The NIEHS Sister Study recruited more than 50,000 women across the continental U.S. and Puerto Rico who were between the ages of 35 and 74, and whose sister had breast cancer. Women in the Sister Study who had a wood-burning stove/fireplace in their longest adult residence had a slightly increased breast cancer risk.
- Women who used an indoor wood-burning stove/fireplace at least once a week had a greater risk of breast cancer than those who did not have a wood-burning stove/fireplace.¹²⁷
- Several studies warn that exposure to high levels of particulate matter (PM) may have deleterious effects on the length of survival among females with breast cancer. Studies have shown that residential wood smoke is a significant contributor to PM emissions.
- One study focused on survival among women with breast cancer in the U.S. Women with breast cancer who lived in areas with higher levels of atmospheric particulate matter were shown to have significantly shorter length of survival than those living in areas with lower exposures. The results of the study suggest that exposure to higher PM levels was associated with early mortality among female breast cancer cases.¹²⁸
- In several other countries, particularly Japan, PM_{2.5} levels have been significantly associated with mortality for women with breast cancer.¹²⁹



Several studies warn that exposure to high levels of particulate matter (PM) may have deleterious effects on the length of survival among females with breast cancer.

Stomach and Intestinal Cancer from Smoked Foods

- The World Cancer Research Fund/American Institute for Cancer Research recommends limiting the consumption of smoked meat.¹³⁰

Figure 3: Cancer Risks Associated with Smoked Foods

Smoked Foods: Cancer Risks

Wood-smoked foods contain a large number of PAHs. For more on high levels of PAHs in traditional smoked salmon in Alaska, see <https://www.ncbi.nlm.nih.gov/pmc/articles/PMC3567306/figure/F1/>



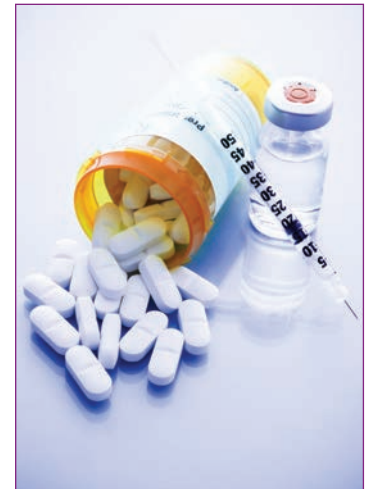
During grilling and smoking, PAHs form when fat and juices from the meat drip into the wood fire, creating flames and smoke that adhere to the surface of the meat. Wood-smoked foods contain a large number of PAHs.

- Decades of epidemiological studies link the consumption of smoked foods with various cancers. Recent studies suggest that grilled, barbecued, and smoked meat intake may also be associated with breast cancer incidence.¹³¹
- A 2017 study funded by the National Cancer Institute involving 1500 women found that smoked meat may increase mortality after breast cancer is diagnosed. The study, the first to examine the associations between smoked meat and mortality after breast cancer, concluded, “a link between dietary sources of PAH and breast cancer prognosis is biologically plausible and epidemiologically consistent.”¹³²
- Grilled and smoked meat intake is a source of PAHs, including benzo[a]pyrene, chrysene, and fluoranthene.¹³³ During grilling and smoking, PAHs form when fat and juices from the meat drip into the wood fire, creating flames and smoke that adhere to the surface of the meat.¹³⁴ Wood-smoked foods contain a large number of PAHs.¹³⁵

- Levels of carcinogenic PAHs in traditionally smoked salmon over burning wood in teepees in Alaska were up to 430 times higher than those measured in commercial products.¹³⁶

Diabetes

- Growing evidence suggests that type 2 diabetes has an autoimmune component¹³⁷ and that diabetics are particularly vulnerable to the acute effects of particle air pollution.¹³⁸
- A study found that exposure to PM_{2.5} increased blood glucose and induced inflammation and insulin resistance in animals, providing a potential biological explanation for a link between PM and diabetes.¹³⁹
- A recent literature review of over 20 studies concluded that exposure to air pollutants (including PM) was significantly associated with insulin resistance and increased incidence of type 2 diabetes.¹⁴⁰



Growing evidence suggests that type 2 diabetes has an autoimmune component and that diabetics are particularly vulnerable to the acute effects of particle air pollution.

Table 5: Facts about Diabetes in the United States

30.3 million people have diabetes (9.4% of the U.S. population)

Diagnosed – 23.1 million people

Undiagnosed – 7.2 million (23.8% of people with diabetes)

Source: National Diabetes Statistics Report, 2017 Estimates of Diabetes and Its Burden in the United States

- In the last five years, dozens of studies have reported a positive association between long-term exposure to ambient PM and risk for type 2 diabetes.¹⁴¹
- A recent study in China is the largest yet to explore the association between long-term PM_{2.5} exposure and type 2 diabetes. It showed that long-term exposure to PM_{2.5} was positively associated with significant increases in diabetes prevalence.¹⁴²



The central nervous system is sensitive to chemicals in wood smoke. Fine particle air pollution can enter the brain via the circulatory system, carrying a number of toxic molecules that contribute to central nervous system diseases.

Central Nervous System Effects and Cognitive Decline

- The central nervous system is sensitive to chemicals in wood smoke. Fine particle air pollution can enter the brain via the circulatory system, carrying a number of toxic molecules that contribute to central nervous system diseases.¹⁴³
- Deficits in learning and memory, as well as in attention-related behaviors, have been reported in both children and adults exposed to particle air pollution.¹⁴⁴
- Exposure to particle pollution also has been associated with decreased cognitive function in older men,¹⁴⁵ accelerated cognitive decline in older women,¹⁴⁶ and Parkinson's disease hospitalizations among Medicare enrollees.¹⁴⁷ Even short-term exposure to air pollution (including PM_{2.5}) increased the progression of Parkinson's disease in humans.¹⁴⁸
- In 2016, a large study found statistically significant associations between long-term PM_{2.5} exposures and dementia, Alzheimer's and Parkinson's disease in Northeastern U.S. cities.¹⁴⁹
- In 2017, another study found that living where PM_{2.5} exceeded EPA's standard increased risks for cognitive decline and dementia in older women by 81% and 92%, respectively. The study included thousands of 65- to 79-year-old healthy women from 48 states. The adverse effects were stronger in women who had a genetic variation that increases the risk for Alzheimer's disease.¹⁵⁰

Mortality

- Ambient PM_{2.5} was the fifth-highest ranking global cause of death in 2015.¹⁵¹ Associations between PM_{2.5} and increased mortality have been found in both healthy and ill people.¹⁵²

THE GROWTH OF RECREATIONAL WOOD BURNING

- In the U.S., both short-term and long-term exposure to low levels of PM_{2.5} increase mortality in older people. A 2016 New England study found that people over 65 had a higher risk of premature death from short and long-term exposure to PM_{2.5} pollution.
- During the New England 2016 study, the USEPA daily standard for PM_{2.5} was almost never exceeded, demonstrating that air pollution standards in the U.S. do not protect human health.¹⁵³

Toxicity of Wood Smoke

- The toxicity of emissions from wood burning depends on wood type, combustion appliance, and specific combustion conditions such as wood moisture content and burn temperatures.¹⁵⁴
- Incomplete combustion produces more toxic chemicals and carbon particles than higher temperature fires.¹⁵⁵ When combustion is less complete, the PM contains more black carbon and volatile organic compounds, or gases.¹⁵⁶ PM derived from low-temperature combustion conditions has been shown to be more toxic to cells than PM derived from higher temperature burns.¹⁵⁷
- While PAH emission levels in slow-burning conditions are generally higher than those in fast-burning conditions,¹⁵⁸ substantially *higher PAH emissions* have been found during air-starved combustion in both wood and pellet stoves.¹⁵⁹
- A comparison of emissions from a wood and a pellet stove found that the highest total organic PM emissions occurred when an additional wood log was placed on glowing embers during low-temperature burns.¹⁶⁰

Wood Smoke vs. Other Combustion Sources

- Emissions from burning wood have many of the same physical and chemical characteristics as other combustion sources.



During the New England 2016 study, the US EPA daily standard for PM_{2.5} was almost never exceeded, demonstrating that the air pollution standards in the U.S. do not protect human health.

However, unlike sources of fossil fuel that burn under controlled conditions, wood burns differently under different conditions, including the type of wood, how long the wood has dried, and the water content of the wood. In addition, wood is burned in a wide variety of appliances and for varying periods of time.¹⁶¹



Health effects of ambient PM exposure from residential wood combustion can be assumed to resemble those of open biomass burning—including forest, brush and peat fires — because of the similar fuels.

Wildfire Smoke Exposures

“Health effects of ambient PM exposure from residential wood combustion can be assumed to resemble those of open biomass burning — including forest, brush and peat fires — because of the similar fuels.”

Source: WHO. Residential heating with wood and coal: health impacts and policy options. 2015.

- Wildfires are the leading source of formaldehyde and acrolein emissions in the U.S.¹⁶² Nationwide, formaldehyde is one of the top three key pollutants in the air that contribute most to overall cancer risks (the others are benzene and acetaldehyde).¹⁶³
- Studies of populations exposed to wildfire smoke have found that those with respiratory or cardiovascular diseases, as well as older adults and children, may experience more severe short-term and chronic symptoms from wood-smoke exposure.
- Children are particularly sensitive to wood smoke because their lungs are still developing. This makes them more susceptible to the loss of pulmonary function than adults are.
- Adolescent monkeys exposed during the first three months of their lives to a prolonged period of smoke from California wildfires experienced significant immune and respiratory changes, as well as reduced lung function.¹⁶⁴
- These findings are consistent with those of multiple studies that link long-term childhood exposure to air pollution with deficits

in lung function in children.¹⁶⁵ In addition to respiratory problems, researchers found lower birth weight for babies following wildfires in California¹⁶⁶ and the Brazilian Amazon.¹⁶⁷

- Data from areas where wildfires have occurred show large increases in cardiovascular and respiratory illnesses and higher mortality rates. A recent review of over 50 epidemiological studies links wildfire smoke exposures to increased overall mortality rates.¹⁶⁸
- In 2015, agricultural fires in Southeast Asia resulted in more than 100,000 adult deaths across Indonesia, Malaysia, and Singapore brought on by breathing high levels of PM2.5.¹⁶⁹
- Multiple studies confirm a relationship between wildfire exposure and increased physician visits,¹⁷⁰ emergency department visits,¹⁷¹ and hospitalizations for asthma and COPD.¹⁷²

Cigarette Smoke Inhalation, Both Active and Involuntary

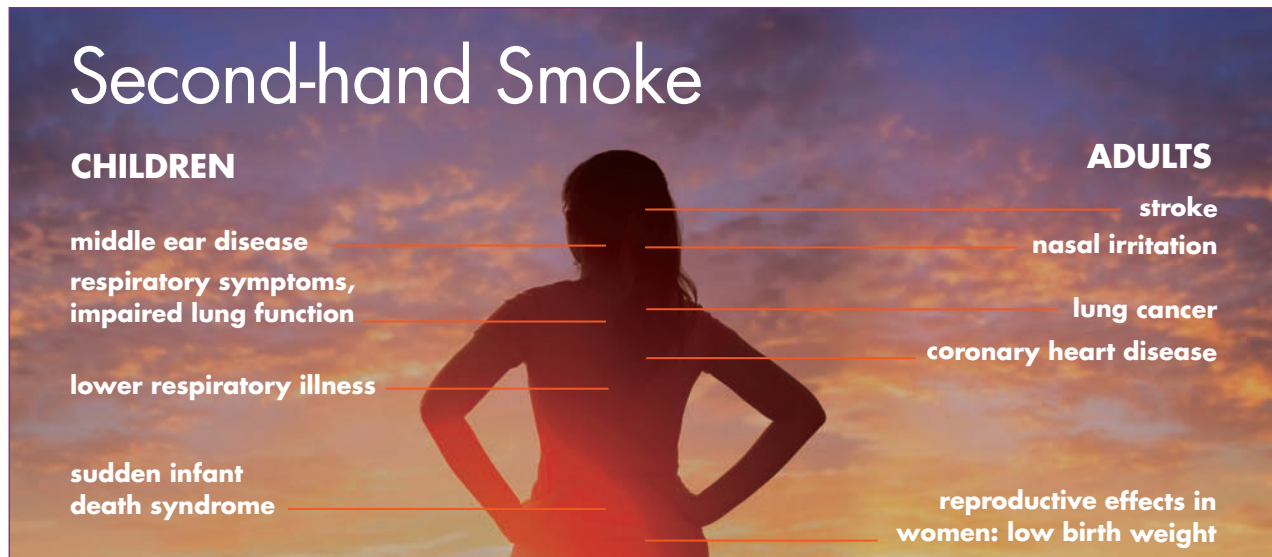
- There are about 600 ingredients in cigarettes. When burned, they create over 7,000 chemicals. At least 69 of these chemicals are known to cause cancer.¹⁷³ Wood smoke contains many of the same toxic and carcinogenic substances as cigarette smoke.
- Chemical components in tobacco smoke with the greatest potential for toxic effects are 1,3-butadiene, acrolein, acetaldehyde and PAHs.¹⁷⁴ These chemicals are also components of wood smoke. However, burning wood generates substantially higher concentrations of many hazardous molecules when compared with burning cigarettes.¹⁷⁵
- Like second-hand cigarette smoke, wood smoke causes numerous health problems in infants and children, including more frequent and severe asthma attacks, respiratory infections, ear infections, and sudden infant death.¹⁷⁶



Data from areas where wildfires have occurred show large increases in cardiovascular and respiratory illnesses and higher mortality rates. A recent review of over 50 epidemiological studies links wildfire smoke exposures to increased overall mortality rates.

THE HARMFUL EFFECTS OF WOOD SMOKE AND

Figure 4: Health Effects Linked to Second-hand Smoke Exposure



Source: CDC, https://www.cdc.gov/tobacco/data_statistics/fact_sheets/secondhand_smoke/health_effects/

The U.S. Centers for Disease Control and Prevention (CDC) has concluded that there is no risk-free level of exposure to second-hand smoke. Likewise, there is no risk-free level of exposure to particulate matter in wood smoke.

- Short-term exposure to PM can compromise the lung's immune defense against infectious agents, increasing susceptibility to infectious disease.¹⁷⁷ With the exception of sudden infant death, all of the health effects in Figure 4 are associated with exposure to chemicals in wood smoke.
- In an affluent region in Western Europe, where infant mortality is low, days with higher PM air pollution are associated with increased infant mortality.¹⁷⁸
- The U.S. Centers for Disease Control and Prevention (CDC) has concluded that there is no risk-free level of exposure to second-hand smoke. Likewise, there is no risk-free level of exposure to particulate matter in wood smoke.
- Thus, breathing any smoke creates a threat to health, and the most vulnerable are susceptible to worsening health following even low-level exposures.

THE GROWTH OF RECREATIONAL WOOD BURNING



Vehicle Emissions

- Wood smoke has higher concentrations of polyaromatic hydrocarbons (PAHs) than found in vehicle exhaust. This leads some researchers to conclude that wood smoke has “a higher mutagenic and carcinogenic potential” than does traffic exhaust.^{179, 180}
- Exhaust from vehicles contains numerous dangerous chemicals, many of which are also found in wood smoke. Known human carcinogens in wood smoke include PAHs, benzene, and formaldehyde, among others.
- The International Agency for Research on Cancer (IARC) has classified both wood smoke and diesel exhaust as carcinogens. Their chemical composition is similar.
- Like wood smoke, diesel exhaust is the result of incomplete combustion. The gaseous fraction of both contain volatile organics, formaldehyde and other aldehydes, 1,3-butadiene, and

The International Agency for Research on Cancer (IARC) has classified both wood smoke and diesel exhaust as carcinogens. Their chemical composition is similar.

Wood smoke particulate matter generates more DNA damage than traffic-generated particulate matter per unit mass in human cell lines.

PH Danielson, et al. Oxidative stress, DNA damage, and inflammation induced by ambient air and wood smoke particulate matter in human A549 and THP-1 cell lines



Source: <https://woodsmokepollution.org/toxins.html>

The smallest particles in wood smoke have the ability to penetrate into the smallest airways of the lungs. Both diesel exhaust and wood smoke are an important source of small fine and ultrafine particles that are the most detrimental to cardiovascular health.

- Diesel exhaust releases particles at a greater rate than gasoline-fueled vehicles, on an equivalent fuel energy basis. Exposure to diesel exhaust has been associated with an increased risk of lung cancer in both human and animal studies.¹⁸¹ Almost all of the diesel particle mass is PM10 or less, and about 95% percent of these particles are less than 2.5 microns in diameter.¹⁸²
- The smallest particles in wood smoke have the ability to penetrate into the smallest airways of the lungs. Both diesel exhaust and wood smoke are an important source of small fine and ultrafine particles that are the most detrimental to cardiovascular health.¹⁸³

Coal Burning

- Wood smoke contains many of the same chemicals as the emissions from coal burning. Both are major sources of ambient air pollution. The dangers of heating homes with coal were gradually recognized over centuries, and the 1952 Great Smog of London caused by household coal burning resulted in major policy responses to coal burning.¹⁸⁴

THE GROWTH OF RECREATIONAL WOOD BURNING

- Wood burning has not received the same attention as coal, although it is also a major source of ambient air pollution in nearly all parts of the world where wood is available.
- WHO reports that 3.7 million premature deaths from exposure to ambient particulate air pollution occurred in 2012, including 94,000 in Canada and the U.S. The use of burning wood for heating homes is a contributor to outdoor air pollution.¹⁸⁵

Table 6: Pollutants in Wood Smoke, Tobacco Smoke, and Diesel and Coal Emissions

Pollutant	Wood Smoke	Tobacco Smoke	Diesel Emissions	Coal Emissions
Carcinogens				
Benzene*	•	?	•	•
Dioxin*	•	•	•	?
1,3-butadiene*	•	•	•	•
Formaldehyde**	•	•	•	•
Lead**	•	?	?	•
PAHs***	•	•	•	•
Green House Gases				
Carbon Dioxide	•	•	•	•
Methane	?	?	•	•
Nitrogen Oxides	•	•	•	•
Other				
Acrolein	•	•	•	•
Acetaldehyde	•	•	•	•
Carbon Monoxide	?	?	•	•
PM2.5	•	•	•	•

*Known human carcinogen **Probable human carcinogen ***There are over 100 different PAHs; seven PAHs are probable human carcinogens



Wood burning has not received the same attention as coal, although it is also a major source of ambient air pollution in nearly all parts of the world where wood is available.



Compared to adults, children inhale a relatively larger amount of air pollutants because of their smaller body size, and they inhale at a higher respiratory rate than adults.

Populations at Greatest Risk

Pregnant Women, Infants, and Young Children

- Over three million children in the U.S. are estimated to live in homes with lower air quality from wood smoke.¹⁸⁶ Young children are especially sensitive to the chemicals emitted from wood smoke.¹⁸⁷
- Compared to adults, children inhale a relatively larger amount of air pollutants because of their smaller body size, and they inhale at a higher respiratory rate than adults.¹⁸⁸
- Exposure to PM affects lung development, including reversible deficits in lung function, chronically reduced lung growth rate, and deficits in long-term lung function.¹⁸⁹
- A significant increased risk of low birth rate and preterm birth have been found in studies on maternal PM_{2.5} exposure.¹⁹⁰ Lower birth weights for babies occurred following wildfires in Southern California¹⁹¹ and agricultural burning in the Amazon.¹⁹²
- Pediatricians are raising awareness of the environmental health risks of wood smoke for children in developed countries. Community wood-smoke exposure is consistently associated with adverse pediatric respiratory health, according to a 2017 review of 36 studies in developed countries. The research focused on respiratory outcomes, but not cardiovascular or neurocognitive health.¹⁹³
- Living in a smoky neighborhood has been associated with emergency department visits in the first three years of life.¹⁹⁴ Ambient exposure to wood smoke during childhood has been associated with bronchitis,¹⁹⁵ ear infections in infants,¹⁹⁶ and reduced lung function in children ages 6-13 years old.¹⁹⁷

Older Adults and Those with Lung and Heart Diseases and Diabetes

- Wood smoke produces fine particles and increases the risk for heart attacks, strokes, heart disease, and congestive heart failure.¹⁹⁸ About half of Americans (47%) have risk factors for heart disease.¹⁹⁹ People with diabetes are more likely to have underlying cardiovascular disease, though they might not know it. Diabetics are particularly vulnerable to the acute effects of particle air pollution.²⁰⁰
- Breathing in wood smoke can exacerbate Chronic Obstructive Pulmonary Disease (COPD) and worsen lung diseases. The CDC estimates that 15 million people in the U.S. have been diagnosed with COPD, and many more likely have COPD but are not aware of it.²⁰¹ About one in 10 children and one in 12 adults in the U.S. has asthma, and the numbers are increasing every year.²⁰²
- The percentage of Americans ages 65 and older is large and growing. By 2060, the 65-and-older age group's share of the total population will rise to nearly 24% from 15%.²⁰³ In 2015, nearly 30% of adults 65+ on Medicare were treated for ischemic heart disease and 11% were treated for COPD.²⁰⁴

Women with Breast Cancer

- Wood smoke contains PAHS, shown to both increase the risk for breast cancer²⁰⁵ and to be associated with mortality for women with breast cancer. Women with breast cancer living in the U.S. in areas with higher levels of PM have been shown to have significant shorter survival rates than those living in areas with lower exposures.²⁰⁶ In several other countries, PM2.5 levels have been significantly associated with mortality in women with breast cancer.²⁰⁷
- Breast cancer is the most common cancer diagnosed among U.S. women, excluding skin cancers. Breast cancer is the second leading cause of cancer death among women, exceeded only by lung cancer. Women living in the U.S. have a one in eight lifetime risk of being diagnosed with breast cancer.²⁰⁸



The CDC estimates that 15 million people in the U.S. have been diagnosed with COPD, and many more likely have COPD but are not aware of it. About one in 10 children and one in 12 adults in the U.S. have asthma, and the numbers are increasing every year.

THE HARMFUL EFFECTS OF WOOD SMOKE AND



Source: <https://woodsmokepollution.org/wood-smoke-is-pm.html>

The USEPA reports that an estimated 70% of smoke from a chimney can actually re-enter that home or a neighbor's home. A 2014 California study found that a home provides little shielding from outdoor wood smoke. The study showed that 78% of black carbon particles from the outside smoke ended up inside neighboring homes.

Wood-Burning Neighborhoods

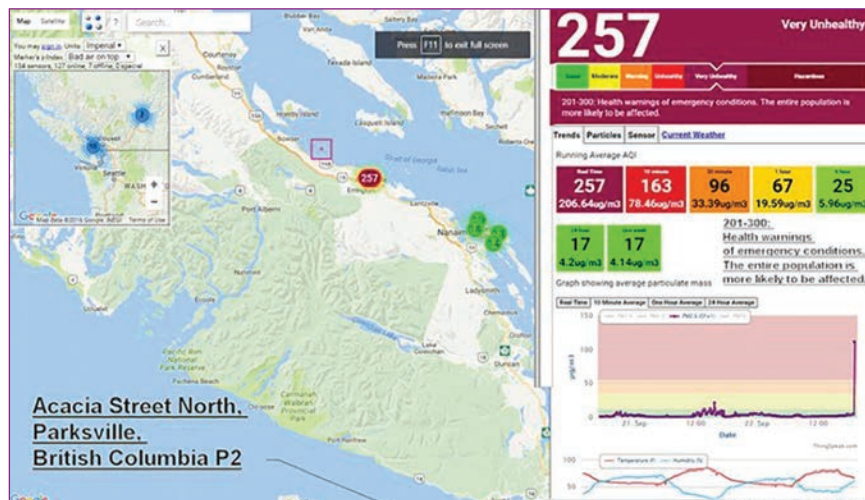
- Combustion of wood in densely populated residential areas is a major source of PM2.5 pollution in many communities.
- According to the World Health Organization (WHO), “Combustion of wood in residential areas and often under cold, calm meteorological conditions can nonetheless lead to high exposure compared to other pollution sources, owing to the principle of intake fraction.”²⁰⁹ The intake fraction is the proportion of released emissions inhaled by residents.
- The USEPA reports that an estimated 70% of smoke from a chimney can actually re-enter that home or a neighbor's home.²¹⁰ A 2014 California study found that a home provides little shielding from outdoor wood smoke. The study showed that 78% of black carbon particles from the outside smoke ended up inside neighboring homes.²¹¹

THE GROWTH OF RECREATIONAL WOOD BURNING

- Another study that used personal monitors showed that exposure to the damaging effects of black carbon from wood smoke infiltrated neighborhood homes.²¹²
- Smoke from outdoor wood burning from a fire pit can seep into neighboring homes. A very unhealthy level of wood smoke was detected inside a home when a neighbor was burning wood in a fire pit. The result was a doubling of PM_{2.5} levels in the home. With even short-term exposures, there are increases in hospitalizations and death rates.²¹³
- The amount of outdoor wood smoke that seeps into homes from neighboring fireplaces or from outdoor wood fires depends on a number of factors, including the home's age, construction, and condition. It also depends on the wood smoke particle size, meteorological conditions, and the rate at which outdoor air enters the home.²¹⁴



Figure 5: PM_{2.5} Levels Measured Inside A Home Near A Wood Burning Fire Pit in British Columbia



Smoke from outdoor wood burning from a single fire pit can seep into neighboring homes. A very unhealthy level of wood smoke was detected inside a home when a neighbor was burning wood in a fire pit. The result was a doubling of PM_{2.5} levels in the home. With even short-term exposures, there are increases in hospitalizations and death rates.

Source: Results measured using a PurpleAir Sensor, <http://www.purpleair.org>
See <https://woodsmokepollution.org/recreational-fires.html>

IV. Regulating Wood Smoke

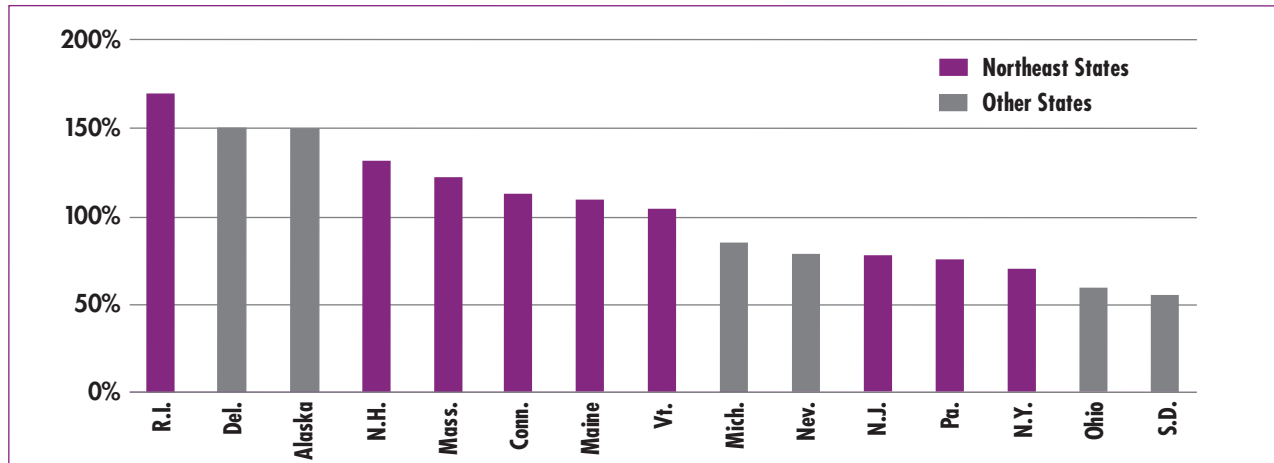


Despite scientific evidence clearly demonstrating the health effects associated with wood smoke, there has been an increase in the number of households in the U.S. that burn wood.

- Despite scientific evidence clearly demonstrating the health effects associated with wood smoke, there has been an increase in the number of households in the U.S. that burn wood. Increasing energy prices and an emphasis on renewable fuel have resulted in a rising number of households burning wood over the past two decades.
- The increase in wood as the main source of household heating is most notable in the Northeast. As shown in Figure 4 on the next page, all nine states in New England and the Middle Atlantic saw at least a 50% jump from 2005 to 2012 in the number of households that rely on wood as the main heating source.²¹⁵
- As more people heat with wood, communities are struggling with ways to improve air quality. Wood-smoke problems are magnified in valleys prone to wintertime temperature inversions, where polluted air is trapped near the ground. In rural Montana communities²¹⁶ and in Fairbanks, Alaska,²¹⁷ for example, residential wood smoke contributes up to 80% of winter PM_{2.5}.

THE GROWTH OF RECREATIONAL WOOD BURNING

Figure 6: Increase in Homes Using Wood as Main Heating Source (2005-2012)



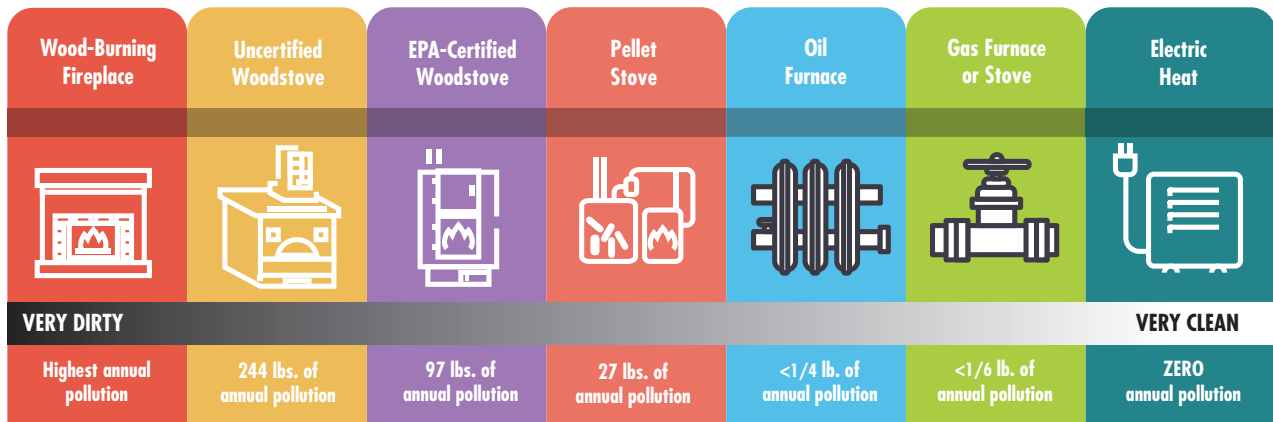
Source: <https://www.eia.gov/todayinenergy/detail.php?id=15431#>

- Wood smoke also contributes to air pollution in urban settings in the U.S. In San Jose, CA, Atlanta, GA, and Seattle, WA, wood burning contributes up to 30% of winter PM_{2.5}.²¹⁸
- Burning wood in campfires, bonfires, chimineas, backyard fire pits, and burn barrels is considered “open burning,” defined by EPA as smoke that enters the air directly, without first going through a chimney, flue, vent, or other similar path. Open burning includes recreational burning, which is generally defined as an outdoor fire burned for warmth or ambiance, as well as burning brush or other land-clearing debris.
- Open burning in outdoor fireplaces, chimineas, fire pits, wood-burning barbecues, and smokers is growing in popularity despite data that demonstrate health effects associated with wood smoke. According to a 2017 survey, outdoor fire pits/fireplaces are the most popular outdoor home design element.²¹⁹ These devices emit smoke low to the ground, directly in our breathing zone. Stagnant conditions and winter temperature inversions can result in wood smoke hanging close to the ground, easily penetrating nearby homes.

Burning wood in campfires, bonfires, chimineas, backyard fire pits, and burn barrels is considered “open burning,” defined by EPA as smoke that enters the air directly, without first going through a chimney, flue, vent, or other similar path.

THE HARMFUL EFFECTS OF WOOD SMOKE AND

Figure 7: Relative Emissions of Fine Particles



Source: Puget Sound Clean Air Agency, www.pscleanair.org

Open burning in outdoor fireplaces, chimineas, fire pits, wood-burning barbecues, and smokers is growing in popularity despite data demonstrating health effects associated with wood smoke.

Air Quality Index (AQI) Alerts

- Most of the authority to regulate air pollution comes from the federal Clean Air Act (CAA). Section 110(a)(1) of the CAA requires states to regulate sources of air pollution through a state plan that provides an implementation, maintenance and enforcement plan regarding the federal air quality standards.
- The National Ambient Air Quality Standards (NAAQS) are used to notify the public when there are high levels of pollutants in the air. The Air Quality Index (AQI) is also used, and a value of 100 on the AQI generally corresponds to the NAAQS for air pollutants. When AQI values are above 100 the air quality is considered to be unhealthy. For PM_{2.5}, an AQI over 35 $\mu\text{g}/\text{m}^3$ for 24 hours is considered to be in the unhealthy category.
- In parts of California, regional Air Districts issue a “Winter Spare the Air Alert,” which prohibits wood burning indoors and outdoors when the PM 2.5 24-hour average is 35 $\mu\text{g}/\text{m}^3$, or 100 on the AQI scale. Connecticut bans open burning when the AQI is 75 and Massachusetts bans burning when the AQI is above 50. In Pennsylvania, it is up to counties to ban burning when the AQI is high.

THE GROWTH OF RECREATIONAL WOOD BURNING

Table 7: EPA's Air Quality Index (AQI) for 24-hour Fine Particle Pollution (PM2.5)

24-Hour PM2.5 (µg/m³)	AQI Categories	AQI Values	AQI Cautionary Statements	AQI Health Effects Statements
0–12.0	Good	0–50	None	None
12.1–35.4	Moderate	51–100	Unusually sensitive people should consider reducing prolonged or heavy exertion.	Respiratory symptoms possible in unusually sensitive individuals, possible aggravation of heart or lung disease in people with cardiopulmonary disease and older adults.
35.5–55.4	Unhealthy for Sensitive Groups	101–150	People with heart or lung disease, older adults, and children should reduce prolonged or heavy exertion.	Increasing likelihood of respiratory symptoms in sensitive individuals, aggravation of heart or lung disease, and premature mortality in people with cardiopulmonary disease and older adults.
55.5–150.4	Unhealthy	151–200	People with heart or lung disease, older adults, and children should avoid prolonged or heavy exertion; everyone else should reduce prolonged or heavy exertion.	Increased aggravation of heart or lung disease and premature mortality in people with cardiopulmonary disease and older adults; increased respiratory effects in general population.
150.5–250.4	Very Unhealthy	201–300	People with heart or lung disease, older adults, and children should avoid all physical activity outdoors. Everyone else should avoid prolonged or heavy exertion.	Significant aggravation of heart or lung disease and premature mortality in people with cardiopulmonary disease and older adults; significant increase in respiratory effects in general population.
Greater than 250.5	Hazardous	Over 300	Everyone should avoid all physical activity outdoors; people with heart or lung disease, older adults, and children should remain indoors and keep activity levels low.	Serious aggravation of heart or lung disease and premature mortality in people with cardiopulmonary disease and older adults; serious risk of respiratory effects in general population.

Who is "SENSITIVE" to PM2.5? People with heart or lung disease, older adults, children and people of lower socioeconomic status are the groups most at risk. See EPA's Technical Assistance Document (link below). Also at higher risk: prenatal children (low birth weight, pre-term birth and IQ reduction), diabetics, and people with higher exposures such as athletes exposed during exercise.

Sources:

National Ambient Air Quality Standards for Particulate Matter – Final Rule, effective March 18, 2013, Federal Register, Vol. 78, No. 10, Jan. 15, 2013, p. 3181 (<http://www.gpo.gov/fdsys/pkg/FR-2013-01-15/pdf/2012-30946.pdf>)

Revised Air Quality Standards for Particle Pollution and Updates to the Air Quality Index (AQI), Dec. 14, 2012, p. 4 (https://www.epa.gov/sites/production/files/2016-04/documents/2012_aqi_factsheet.pdf)

Technical Assistance Document for the Reporting of Daily Air Quality, May 2016 (<https://www3.epa.gov/airnow/aqi-technical-assistance-document-may2016.pdf>)

Integrated Science Assessment for Particulate Matter – Final Report, Dec. 2009 (<https://cfpub.epa.gov/ncea/risk/recordisplay.cfm?deid=216546>)

Credit: Clean Air Fairbanks, cleanairfairbanks@gmail.com (<http://cleanairfairbanks.wordpress.com>)



Wood smoke can have a significant impact on exposures in neighborhoods where wood burning is prevalent, even during periods when the NAAQS reports general good air quality. This is because there are no air monitors in that area to pick up the wood smoke emissions.

Air Quality Index (AQI) Limitations

- The AQI is linked to a PM_{2.5} monitoring network. The monitors are inadequately placed in rural areas where wood burning often takes place. Since it is common for wood smoke to originate from sources within neighborhoods where monitoring networks are lacking, air monitoring networks do not adequately measure local air quality.
- Wood smoke can have a significant impact on exposures in neighborhoods where wood burning is prevalent, even during periods when the NAAQS reports general good air quality. This is because there are no air monitors in that area to pick up the wood-smoke emissions.²²⁰
- Studies show that the 24-hour NAAQS for PM_{2.5} (35 µg/m³) may not adequately protect against sub-daily peaking at hourly concentrations associated with adverse health effects.²²¹ A spatial analysis of wood smoke in the Adirondack Mountains concluded that current air quality standards mask these episodic peaks through daily averaging.²²²
- Both short- and long-term exposure to PM_{2.5} has been associated with mortality rates from all causes at levels that are below the current USEPA 24-hour PM_{2.5} standard of 35 µg/m³ daily.²²³

Open Burning Regulations

- Federal law prohibits open burning of residential, commercial, institutional or industrial solid waste with certain exceptions for land-clearing debris, diseased trees and debris from emergency clean-up operations. (40 CFR Part 257-3.7(a))
- In spite of regulations, trash burning remains a problem in some rural areas and ordinances are often poorly enforced. Some states,

THE GROWTH OF RECREATIONAL WOOD BURNING

such as Wisconsin and Pennsylvania, allow open burning of domestic waste. Other states, including Connecticut, only allow burning of brush.

- Some local governments regulate the material burned, while others regulate distance from property line and/or the size of the fire. Some local governments ban fires on days when AQI alerts are issued. The following is a sampling of regulations from around the country.
- In Montgomery County, MD, some recreational burning is allowed under strict conditions. However, most open burning without a permit is prohibited. Recreational fires must be at least 20 feet away from any building or structure, smoke is “not allowed to cross property lines,” and burning is not allowed on “Code Orange” or “Code Red Air Quality days.”²²⁴
- In Portland, Oregon, recreational fires must burn clean, dry, cord-type firewood and be less than three feet in diameter, with a pile less than two feet high.²²⁵
- Allegheny County, PA, has the same fire size requirements as Portland, and also specifies that only fire logs, paraffin logs, or wood pellets may be used. The fire must be 15 feet from the nearest neighbor’s dwelling or inhabited area, any property line, roadway, sidewalk, or public accessway.²²⁶
- In many cities, including Denver and Boston, there are complete bans on outdoor fires, including portable fire pits and chimineas at all times of the year.²²⁷ Outdoor burning is banned in 21 cities in Massachusetts in addition to Boston.
- The variability in state wood burning regulations demonstrates the specific risk-management challenges that wood smoke is creating throughout the U.S. State wood smoke regulatory programs in the Northeast are summarized in Table 8.



Some local governments regulate the material burned, while others regulate distance from property line and/or the size of the fire. Some local governments ban fires on days when AQI alerts are issued.

THE HARMFUL EFFECTS OF WOOD SMOKE AND

Table 8: Residential Open and Recreational Burning Restrictions in Northeast States

State	Total Burn Bans	Burn Bans During Poor Air Quality Days	PM2.5 Monitoring Stations	Recreational Burning Limits Examples: Campfire, Bonfire, Chiminea
CT ¹	No	AQI = >75	8	Prohibited if nuisance is created or is restricted by local municipality.
ME ²	No	No	11	As long as no nuisance is created.
MA ³	22 cities ⁴	AQI = >51 ⁵	28	Some cities and towns regulate, limit/prohibit use of chimineas, fire pits and outdoor fireplaces.
NH ⁶	No	No	14	Campfire fires < 2-foot diameter may be burned during the day. All others must be burned between 5 p.m. and 9 a.m.
NJ	No	When conditions “make such fires hazardous”	33	Unless “offensive or objectionable because of smoke emissions”; Fire pit regulations set by local officers.
NY ⁷	Spring ⁸	No	>50	Exceptions for ceremonial or celebratory bonfires; only charcoal or clean, untreated or unpainted wood can be burned; campfires <3’ x 4’.
PA ⁹	Designated air basins ¹⁰	Varies by county ¹¹	44	Outside of designated air basins, if smoke cannot be seen or smelled outside of the property where the burning is taking place; does not “interfere with the reasonable enjoyment of life or property”; does not cause damage to vegetation or property; and is not harmful to human or animal health. Domestic refuse ok to burn where not more than two families are living and when generated onsite. ¹²
VT ¹³	No	No	5	When not prohibited by local ordinance. Only natural wood and yard waste from property maintenance. No trash can be burned.

Sources:

¹ CT DEEP. http://www.ct.gov/deep/cwp/view.asp?a=2684&q=531300&deepNav_GID=1619

² Department Of Environmental Protection Chapter 102: Open Burning Chapter 102: OPEN BURNING, <http://www.maine.gov/dacf/mfs/archive/fpd/downloads/openburning.pdf>

³ <http://www.mass.gov/eea/agencies/massdep/air/quality/open-burning-answers-to-your-burning-questions.html#A Word About Fire Pits>

⁴ Campfires, fire pits, burn barrels and burning of brush and yard waste prohibited

⁵ <http://www.mass.gov/eea/docs/dep/air/community/noburn.pdf>

⁶ <https://www.des.nh.gov/organization/commissioner/pip/publications/ard/documents/quick-guide.pdf>

⁷ <http://www.dec.ny.gov/chemical/58519.html>

⁸ Defined as smoke emitted directly into the air, including burning in barrels

⁹ PA DEP. Air Pollution From Household Open Burning In Pennsylvania

¹⁰ <http://www.pacode.com/secure/data/025/chapter129/s129.14.html>

¹¹ <http://www.achd.net/air/pubs/pdf/Article21.pdf>

¹² “Domestic Refuse” does not include such items as demolition waste, insulation, shingles, treated wood, paint, painted or stained objects or furniture, tires, mattresses, box springs, metal, insulating coating on wire, television sets and appliances, automobiles, automotive parts, batteries, PVC products, waste oil and other petroleum products.

¹³ <http://dec.vermont.gov/air-quality/compliance/open-burning>; <http://dec.vermont.gov/tags/backyard-burning>; <http://dec.vermont.gov/sites/dec/files/aqc/compliance/documents/BYBFactsheet.pdf>

THE GROWTH OF RECREATIONAL WOOD BURNING

- In the state of Washington, all burning is banned in counties where there is no local clean air agency.²²⁸
- California's regional air pollution control agencies prohibit all wood burning, including all outdoor wood burning, during their "Spare the Air Tonight" warnings issued between the months of November and February. The ban goes into effect when the PM2.5 24-hour average NAAQS reach 35 $\mu\text{g}/\text{m}^3$ or 100 on the AQI scale.²²⁹
- Utah's ban on burning takes place during winter inversions, which occur between November and March. In certain counties the ban includes outdoor fireplaces, fire pits and charcoal grill smokers.²³⁰

Regulations in Allegheny County, Pennsylvania

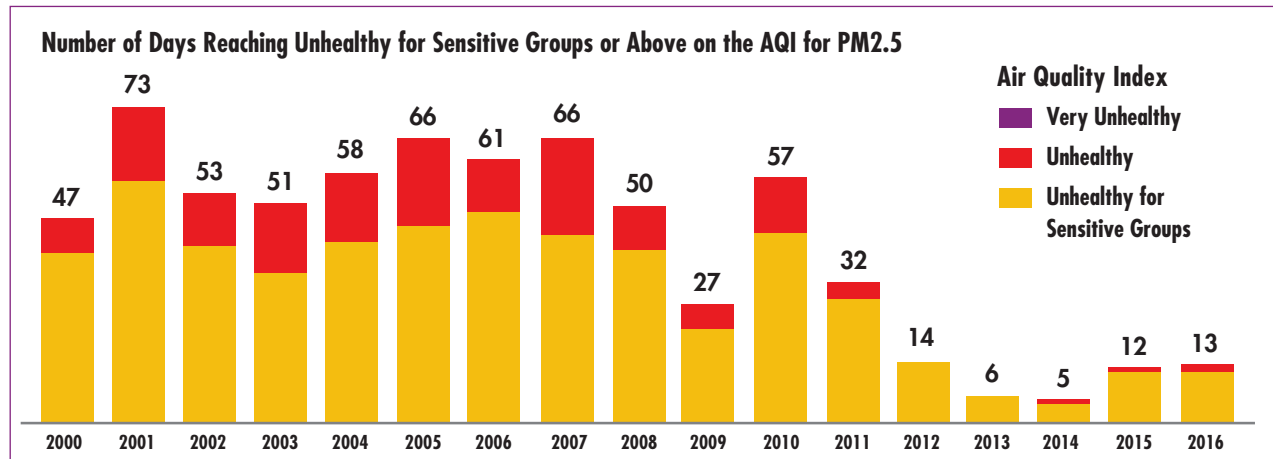
- In 2017, the annual PM2.5 concentrations recorded in Allegheny County ranked thirteenth among all U.S. counties. Among U.S. cities, Pittsburgh, the county seat, was the eighth most polluted for annual PM2.5. Nearly 2.6 million people live in this metropolitan area.²³¹
- Nearly 33% of those living in the Pittsburgh-New Castle-Weirton Metropolitan Area suffer from illnesses that could be caused or exacerbated by small diameter particles. Rates of childhood asthma in the region are higher than the national average at 13%; in some of the most polluted areas, rates are as high as 25%.²³² In the Monongahela River Valley, a highly populated valley with heavy industry, an estimated 1,406 more deaths occurred between 2000 and 2008 than expected, based on national rates, due to poor air quality.²³³
- Wood burning complaints are among the most common problems reported to the Allegheny County Health Department's Air Quality Program.²³⁴ Allegheny County is hilly, with valleys that trap wood smoke near the ground during periods of still, damp air and temperature inversions. In rural parts of the county, it is not uncommon for people to use burn barrels to dispose of their trash.



Some local governments regulate the material burned, while others regulate distance from property line and/or the size of the fire. Some local governments ban fires on days when AQI alerts are issued.

THE HARMFUL EFFECTS OF WOOD SMOKE AND

Figure 8: Air Quality Index for PM2.5 in 2016 in Pittsburgh, PA



Source: Preliminary air quality data as reported to EPA's Air Quality System and AirNow.gov

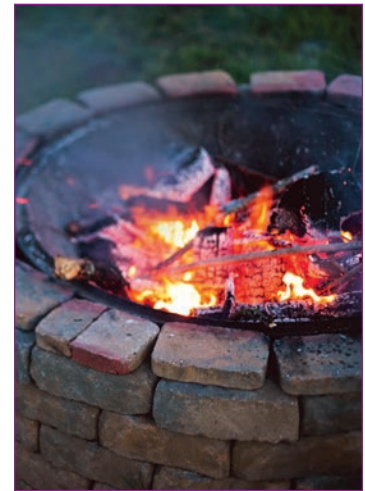
In municipalities without curbside trash collection or mandated recycling, burning is the easiest and least expensive method to dispose of household and yard waste.

Burning is legal under state law, but is restricted by the Allegheny County Health Department, which is responsible for protecting the public's health by regulating air pollutants and enforcing federal pollution standards.

- Burning is legal under state law, but is restricted by the Allegheny County Health Department (ACHD), which is responsible for protecting the public's health by regulating air pollutants and enforcing federal pollution standards. Title 25 of the Pennsylvania Code allows open burning outside of designated air basins, with several conditions. Open burning is considered legal if the smoke cannot be seen or smelled outside of the property burning, if it does not interfere with the reasonable enjoyment of life or property, if it does not cause damage to vegetation or property, and if it is not harmful to human or animal health.
- Exceptions to restrictions include fires that are set to prevent fire hazards, instructions to fire-fighting personnel, prevention and control of disease or pests, fires in conjunction with the production of agricultural commodities, fires burning household waste generated in a home occupied by no more than two families, recreational or ceremonial fires, and fires used for cooking food.²³⁵

THE GROWTH OF RECREATIONAL WOOD BURNING

- During air pollution alerts, open burning is restricted. However, particulate matter (PM) must reach levels of $350 \mu\text{g}/\text{m}^3$ over the 24-hour average before an alert goes into effect.²³⁶
- Allegheny County historically had a general ban on open burning, but it was loosely enforced. Because of an increase in public complaints about wood smoke, the Allegheny Health Department broadened its open-burning restrictions to include recreational burning: campfires, bonfires, chimineas, and backyard fire pits.²³⁷
- In open burning, only clean wood, propane or natural gas, fire logs, paraffin logs, or wood pellets may be used; fires may be no larger than 3' wide by 3' long by 2' high and must be at least 15 feet from the nearest neighbor's dwelling or inhabited area; and all wood-burning activities are prohibited on Air Quality Action days. When air quality inspectors investigate citizen complaints, they may issue fines for nuisance smoke and smoke odors. Fines begin around \$250 and increase with repeated noncompliance.²³⁸
- Despite these recently added restrictions, wood smoke is still a source of pollution in Allegheny County. Pennsylvania's non-profit Clean Air Council is concerned that the ACHD public education campaign falls short of strongly informing the public about the health threats of wood smoke.²³⁹ The Council established the *iseesmokepa.org* website to report residential smoke, and published "How to Talk About Wood Smoke Pollution," which is a guide to negotiating with neighbors about wood burning.²⁴⁰
- In Pittsburgh, the non-profit "Group Against Smog & Pollution" (GASP) developed educational materials on wood smoke and burn barrels.²⁴¹ The group also manages a Citizens Smoke Reading Program, which empowers people to understand emissions and instructs them on how to report violations. The Heinz Endowments and the Pittsburgh Foundation provided 1,000 "Speck" air monitors to public libraries, schools and citizen groups in the region. These devices detect indoor PM 2.5.



Because of an increase in public complaints about wood smoke, the Allegheny Health Department broadened its open-burning restrictions to include recreational burning: campfires, bonfires, chimineas, and backyard fire pits.

Regulations in Connecticut

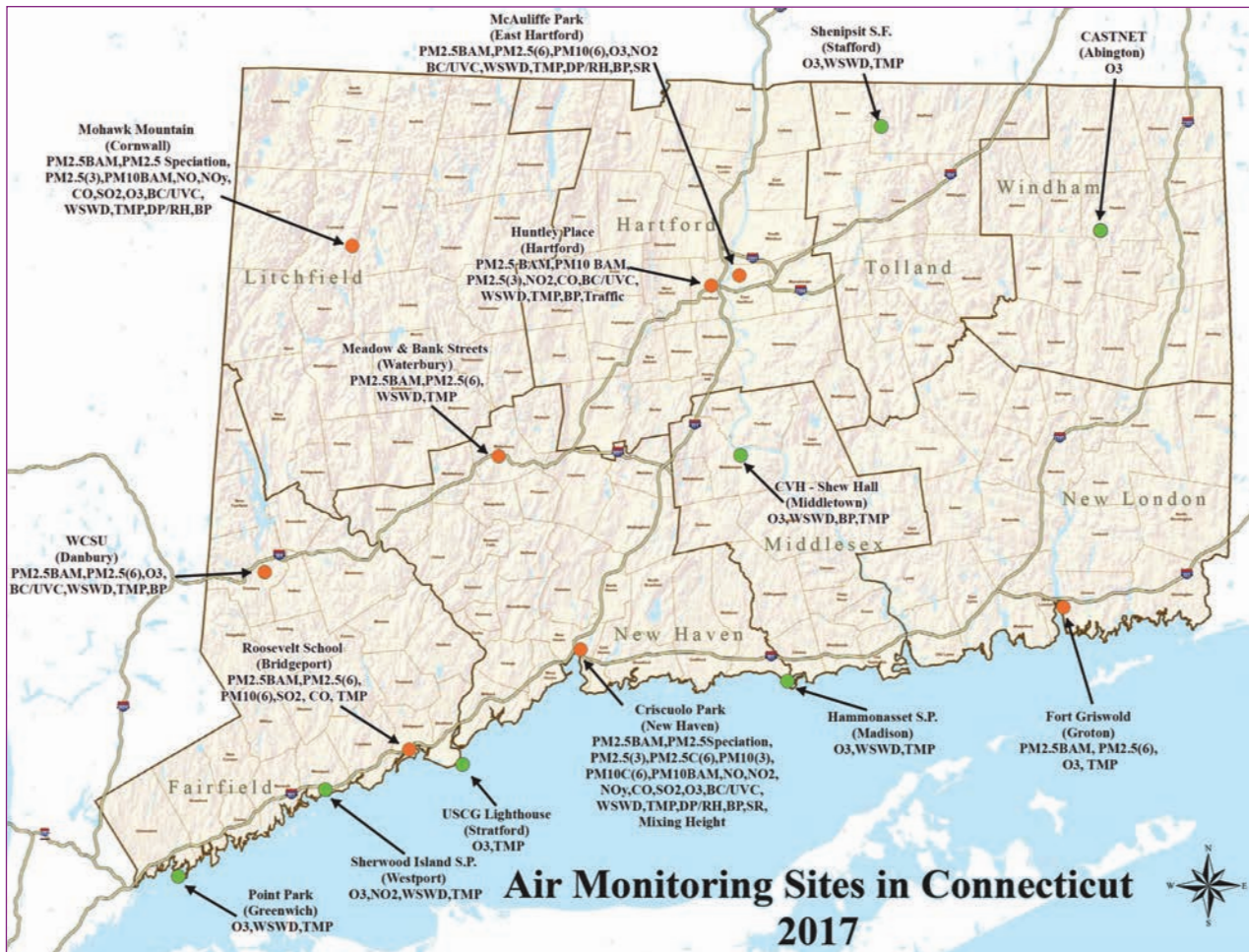


In Connecticut, particle pollution from fireplaces, wood stoves and outdoor burning creates a serious air quality problem in low-lying areas when inversions trap smoke close to the ground.

- In Connecticut, particle pollution from fireplaces, wood stoves and outdoor burning creates a serious air quality problem in low-lying areas when inversions trap smoke close to the ground. Burning wood as a primary heat source in Connecticut is increasingly common—more than doubling between 2000 and 2010.²⁴²
- About 26,000 households in Connecticut burn wood for heat and wood burning is especially prevalent in the northeast corner of the state.²⁴³ Families statewide burn wood both inside and outside for ambience, despite a growing population that is sensitive to the health effects of smoke.
- Statistics show that asthma rates in the state are higher than the national rates.²⁴⁴ Nearly 10% of all children and 9% of adults have been diagnosed with asthma. One in 20 Connecticut adults has been diagnosed with Chronic Obstructive Pulmonary Disease (COPD).²⁴⁵ In addition, 16% of the population is over 65.²⁴⁶
- Connecticut allows the recreational burning of campfires, bonfires, fire pits, chimineas, or similar devices, unless they create a nuisance for neighbors or are in violation of any restrictions imposed on such burning by a local municipality.²⁴⁷ As is the case in Allegheny County, PA, defining a “nuisance” is challenging and expensive.
- Connecticut’s Department of Energy & Environmental Protection (DEEP) defines a nuisance as something that substantially interferes with the use or enjoyment of another person’s property.²⁴⁸
- It is very important for local health directors in Connecticut to know that the burning of wood in a campfire, bonfire, chiminea or other similar devices is prohibited if the burning is conducted in a way that creates a nuisance for neighbors. A local health director in Connecticut has the authority to shut down a wood-burning device if it creates a public health nuisance.

THE GROWTH OF RECREATIONAL WOOD BURNING

Figure 9: Air Quality Monitors in Connecticut



Source: http://www.ct.gov/deep/lib/deep/air_monitoring/ct_airmonitors.pdf

- There are only eight PM2.5 monitors in the state. No PM2.5 monitors are located in areas where wood burning is most common.
- There are seven additional air monitoring sites in the state that do not measure PM2.5.
- Although monitoring data from 2008 through 2012 show that Connecticut meets EPA's PM2.5 standards, there are only eight PM2.5 monitors in the state. Even more troubling, there are no monitors in areas where wood burning is most common.
- Campfires and bonfires are not defined by state statute or regulation; however, some towns have special requirements to conduct this type

THE HARMFUL EFFECTS OF WOOD SMOKE AND



Although monitoring data from 2008 through 2012 show that Connecticut meets EPA's PM2.5 standards, there are only eight PM2.5 monitors in the state. Even more troubling, there are no monitors in areas where wood burning is the most common.

of burning and may require homeowners to obtain a permit prior to burning a campfire on their property. Special requirements and permits may include limits on the size of the fires and certain setback distances from structures and/or property lines.

- In Connecticut, open burning refers to brush fires, camp fires and bonfires. Connecticut only allows clean, unprocessed wood to be burned. Processed wood is wood that has been glued or treated, including crates, pallets, and wood scraps. Campfires may not contain construction debris, wood pallets, or painted, stained, or treated wood. Unprocessed wood is untreated, natural wood and rough-cut lumber. Garbage may not be burned in campfires, bonfires, fire pits, chimineas or other similar devices.
- Open burning in Connecticut is restricted under the following conditions: when the AQI is forecast to be 75 or higher anywhere in the state; when the Forest Fire Danger Index is rated High, Very High, or Extreme; when the national or state ambient air quality standards may be exceeded; when a hazardous health condition might be created; or when there is an advisory from DEEP of any air pollution episode.²⁴⁹
- For open brush burning, residents must have a valid and signed permit from local officials, typically the town's Fire Marshal. Open burning is not permitted to clear land prior to construction activities and cannot be used as a way to dispose of construction debris, household trash, or leaves.
- Enforcement of wood smoke exposures is divided between the DEEP and local health departments in Connecticut. If the offending wood smoke comes from an Outdoor Wood Furnace (OWF), the DEEP handles the complaint. If the OWF complies with state statutes, but still harms neighbors, the DEEP will turn the issue over to the local health department.

- In Connecticut, if an outdoor wood furnace (OWF) does not comply with state statutes, the DEEP will enforce compliance or shut down the OWF.²⁵⁰ All other offending wood smoke issues created by the OWF are handled by the local government, usually by the local health department in the town where the OWF is located.

Regulations in San Joaquin Valley, California

- Unique geographic and meteorological conditions and a growing population in the San Joaquin Valley contribute to poor air quality. Burning wood specifically is the leading cause of wintertime pollution in the Valley.
- In the past, the San Joaquin Valley experienced some of the nation's most polluted air, leading to a high number of hospitalizations for a variety of respiratory and cardiovascular diseases. These included asthma, acute bronchitis, pneumonia, and myocardial infarctions.²⁵¹
- To attain the NAAQS and improve public health, the San Joaquin Valley Unified Air Pollution Control District adopted a rule to reduce emissions from winter wood smoke. Rule 4901 was the first burn regulation in the U.S. to be applied uniformly across an entire air basin.
- Rule 4901 was amended in 2003 to require mandatory curtailment of residential wood burning when the air quality index reached 150, or about $65 \mu\text{g}/\text{m}^3$ of $\text{PM}_{2.5}$.²⁵²
- Newer amendments to Rule 4901 allow only certain clean-burning stoves, fireplace inserts or heaters to be used when $\text{PM}_{2.5}$ concentrations are forecast to reach 20 to $65 \mu\text{g}/\text{m}^3$.²⁵³ These regulations discourage, but do not prohibit, wood burning when $\text{PM}_{2.5}$ concentrations are below $20 \mu\text{g}/\text{m}^3$.²⁵⁴

San Joaquin Valley



Unique geographic and meteorological conditions and a growing population in the San Joaquin Valley contribute to poor air quality. Burning wood specifically is the leading cause of wintertime pollution in the Valley.

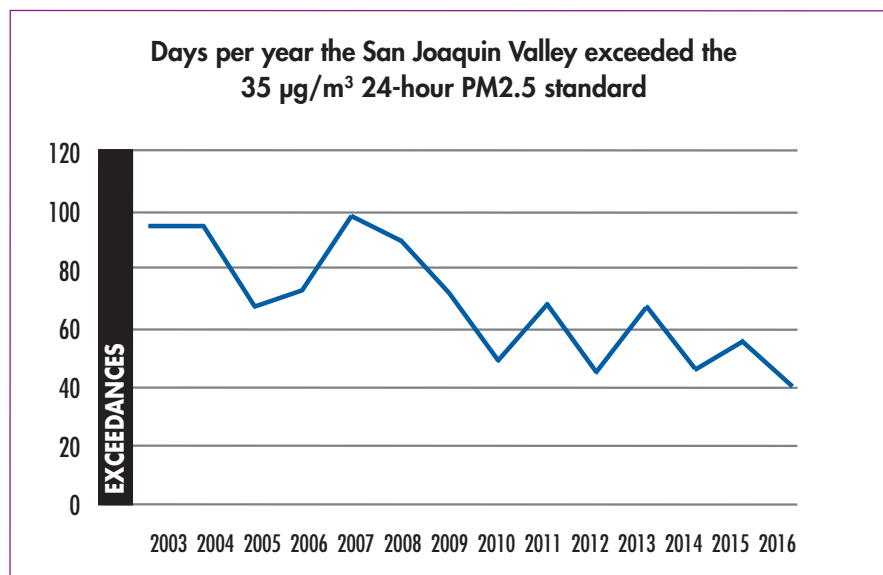
THE HARMFUL EFFECTS OF WOOD SMOKE AND



Wood smoke regulations improve air quality and public health, according to studies of the San Joaquin Valley, which has one of the oldest and most stringent wood smoke regulatory programs in the country.

- Wood-smoke regulations improve air quality and public health according to studies of the San Joaquin Valley, which has one of the oldest and most stringent wood smoke regulatory programs in the country.
- Over the past decades, cleaner technologies have been developed to reduce emissions from wood-burning devices. San Joaquin Valley residents can use EPA-certified devices unless air pollution climbs to a critical point.
- Curtailments of residential wood combustion under Rule 4901 have resulted in substantial health benefits for San Joaquin Valley residents. By 2008, wood-burning curtailments had resulted in average daily PM 2.5 reduction of 13.6% in California's ninth-largest city, Bakersfield, at the southern end of the San Joaquin Valley.²⁵⁵

Figure 10: San Joaquin Valley PM 2.5 Reduction



Source: San Joaquin Valley Air Pollution Control District. Record Setting PM_{2.5} Air Quality in 2016. See <http://valleyair.org/pm25highlights.htm>

THE GROWTH OF RECREATIONAL WOOD BURNING

- By 2008, air quality in the San Joaquin Valley during the winter had improved dramatically. Burn-season average concentrations of benzo(a)pyrene decreased by 32%; butadiene decreased by 44%; benzene decreased by 29%; and toluene decreased by 34%. Average concentrations of PM2.5 during the winter burn season decreased by 25%.²⁵⁶
- By 2015, the San Joaquin Valley recorded reductions in both fine particulate pollution (PM 2.5) and cardiovascular hospitalizations in the air basin.²⁵⁷ In 2016, the number of days that exceeded the 24-hour PM2.5 standard reached an all-time low.
- A study of San Joaquin Valley residents aged 65 years and older found that Rule 4901 prevented 7% of cardiovascular disease cases in the entire air basin, 8% of cases in rural areas, and 5% of cases in urban regions. In addition, Rule 4901 prevented 16% of ischemic heart disease cases in the entire air basin, 17% of cases in rural areas, and 13% of cases in urban regions.²⁵⁸
- The study actually underestimates the effectiveness of the San Joaquin Valley's wood burning restrictions because PM2.5 levels near many wood-burning sites can be up to 25% higher than shown by monitoring because the monitors are not nearby.²⁵⁹
- In addition, the data do not reflect exposures to PM2.5 from ambient outdoor air that enters homes, and from the indoor air in homes that burn wood.
- Rule 4901, the first burn regulation in the U.S. that applies uniformly across an entire air basin, is considered the most stringent in the nation, and the resulting health improvements have been clearly documented. Since Rule 4901 was implemented in the San Joaquin Basin, air quality has improved and hospital admissions have fallen significantly.



Rule 4901, the first burn regulation in the U.S. that applies uniformly across an entire air basin, is considered the most stringent in the nation, and the resulting health improvements have been clearly documented.



Cigarette smoke and wood smoke contain many of the same toxic chemicals, yet cigarette smoke is heavily regulated by all levels of government while wood smoke is barely regulated.

Second-Hand Cigarette Smoke Heavily Regulated, Wood Smoke Lightly Regulated

- Cigarette smoke and wood smoke contain many of the same toxic chemicals, yet cigarette smoke is heavily regulated by all levels of government while wood smoke is barely regulated. How did cigarette smoke come to be so stringently regulated?
- Reports on the dangers of second-hand smoke were the impetus behind governmental regulations to restrict second-hand cigarette smoke. The 1986 report from the Surgeon General, “The Health Consequences of Involuntary Smoking,”²⁶⁰ translated scientific evidence on second-hand smoke into policy initiatives.
- The report concluded that second-hand smoke caused diseases, including lung cancer, in healthy nonsmokers. Children of parents who smoke have an increased frequency of respiratory infections compared to the children of nonsmokers.
- The report also found that simply separating smokers from nonsmokers within the same air space may reduce, but does not eliminate, the exposure of nonsmokers to environmental tobacco smoke.
- In 2006, the Surgeon General concluded that local smoke-free policy initiatives engaged communities in an intensive process of public education and debate. It was also found that early on, local second-hand smoke-free policies were often more successful than federal or state initiatives.²⁶¹
- “This process raises public awareness regarding the health risks that second-hand smoke exposure poses to nonsmokers, increases public support for policy measures that provide protections from these risks, and changes public attitudes and norms regarding the social acceptability of smoking. These changes, in turn, lay the

THE GROWTH OF RECREATIONAL WOOD BURNING



groundwork for successfully enacting and implementing the proposed policy, which reinforces and accelerates these changes,” the report stated.²⁶²

- As of 2018, a total of 22,661 municipalities were covered by a 100% smoke-free provision in non-hospitality workplaces, and/or restaurants and bars, by either a state, commonwealth, territorial, or local law. Forty-two states and the District of Columbia have local laws in effect that require non-hospitality workplaces and/or restaurants and bars to be 100% smoke-free.
- In addition, there were 3,676 states, commonwealths, territories, cities, and counties with a law that restricts smoking in one or more outdoor areas.²⁶³
- The critical factor driving adoption of these laws is the clear scientific evidence that second-hand smoke causes disease in nonsmokers. This rationale applies to wood-smoke emissions as well. Residential wood smoke is a significant contributor to PM2.5 emissions in both urban and rural areas in the U.S.

Children of parents who smoke have an increased frequency of respiratory infections compared to the children of nonsmokers.

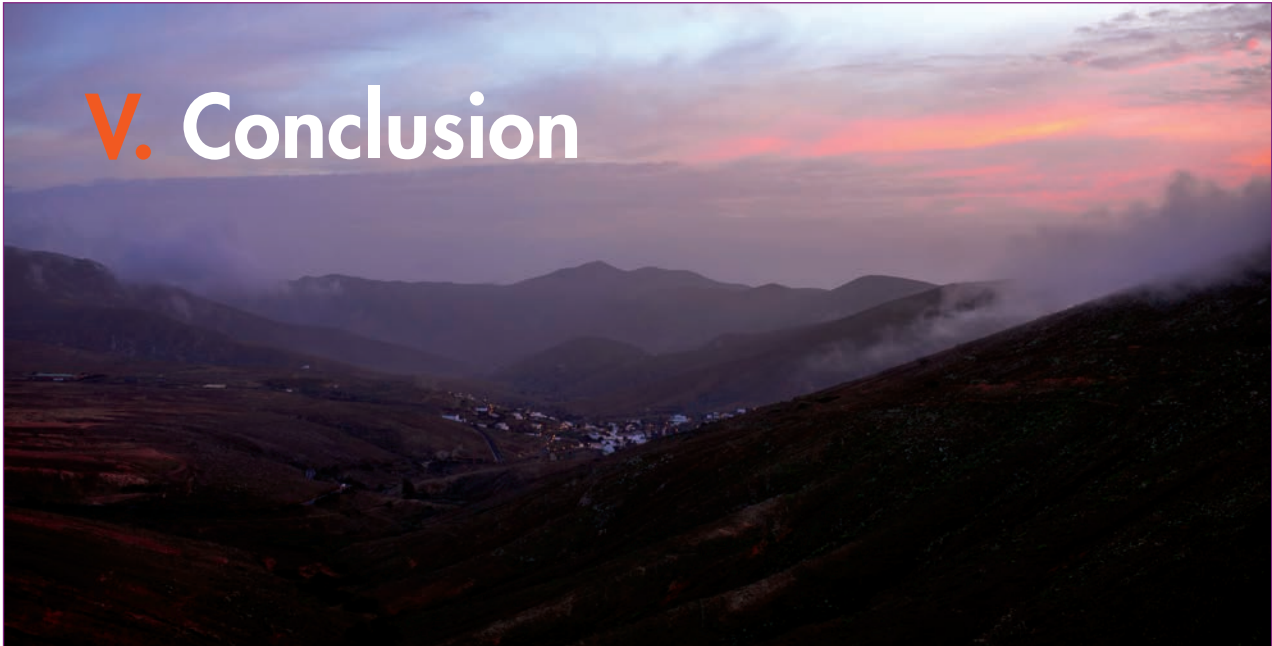
THE HARMFUL EFFECTS OF WOOD SMOKE AND

Table 9: Milestones in Establishing Second-Hand Smoke Policies in the U.S.

Year	Event
1971	The Surgeon General proposes a federal smoking ban in public places.
1972	The first report of the Surgeon General to identify second-hand smoke as a health risk is released.
1973	Arizona becomes first state to restrict smoking in several public places.
1974	Connecticut passes first state law to apply smoking restrictions in restaurants.
1977	Berkeley, CA, is first community to limit smoking in restaurants and other public places.
1986	Surgeon General's and National Academy of Sciences (NAS) reports conclude second-hand smoke is a cause of lung cancer in healthy nonsmokers.
1988	New York City ordinance bans/limits smoking in various public places; California implements statewide ban on smoking aboard all commercial intrastate airplanes, trains, and buses.
1992	USEPA classifies second-hand smoke as a Group A (known to be harmful to humans) carcinogen.
1994	San Francisco passes a ban on smoking in all restaurants and workplaces; Utah enacts a law restricting smoking in most workplaces.
1995	New York City bans smoking in most workplaces; California passes legislation that prohibits smoking in most enclosed workplaces; Vermont's smoking ban is extended.
1997	California EPA is first major report to conclude definitively that second-hand smoke exposure is a cause of heart disease in nonsmokers.
2000	The New Jersey Supreme Court strikes down a local clean indoor air ordinance adopted by the city of Princeton on the grounds that state law preempts local smoking restrictions.
2001	Surgeon General reports a causal relationship between second-hand tobacco smoke exposure and heart disease mortality among women who were nonsmokers.
2002	The Michigan Supreme Court refuses to hear appeal of lower court rulings striking down a local clean indoor air ordinance on grounds that state law preempts local communities from adopting smoking restrictions more stringent than the state standard; Delaware enacts a comprehensive smoke-free law, and repeals a preemption provision precluding communities from adopting local smoking restrictions that are more stringent than state law.
2003	Connecticut and New York enact comprehensive smoke-free laws; Maine enacts a law requiring bars, pool halls, and bingo venues to be smoke-free; Iowa and New Hampshire supreme courts strike down local smoke-free ordinances, ruling that they are preempted by state law.
2004	IARC identifies second-hand smoke as "carcinogenic to humans"; Massachusetts and Rhode Island enact comprehensive smoke-free laws.
2005	Delaware and Illinois repeal state preemption provision precluding local smoking restrictions that are more stringent than the state standard; Montana, North Dakota, Georgia, Vermont, Maine, Rhode Island strengthen or enact legislation that make most workplaces and other areas smoke-free.
2006	DC, Colorado, New Jersey, Utah, Arkansas, and Puerto Rico enact or strengthen legislation requiring most workplaces and public places to be smoke-free.

Source: The Health Consequences of Involuntary Exposure to Tobacco Smoke: A Report of the Surgeon General. Office on Smoking and Health (US). Atlanta (GA): Centers for Disease Control and Prevention (US); 2006.

V. Conclusion



- Wood-smoke exposure is a serious risk to human health. It is known to cause and exacerbate many pulmonary and cardiovascular diseases.
- Despite convincing scientific evidence that wood smoke harms health, governments at all levels have failed to effectively regulate wood burning. Wood smoke now constitutes nearly 30% of airborne particle pollution in a number of urban areas during winter months, as heating with wood has continually increased.
- Summer wood burning has also increased. Outdoor fireplaces, fire pits, chimineas, and cooking appliances have become increasingly more common. Home furnishing catalogs sell many of these wood burning appliances for home recreational use. Supermarkets and big box stores sell them and promote them as well. Recreational wood burning often takes place in areas where homes are close together and the smoke often enters neighboring homes.
- This rise in the popularity of recreational wood burning poses a problem for regulators whose laws and regulations are often older

Despite convincing scientific evidence that wood smoke harms health, governments at all levels have failed to effectively regulate wood burning.

THE HARMFUL EFFECTS OF WOOD SMOKE AND



Raising public awareness of the potential health threats of wood smoke will increase public support for policy measures that provide protections from these risks, and change public attitudes and norms regarding the social acceptability of burning wood.

than this new craze of home outdoor wood burning. This increase places a burden on neighbors who complain about breathing other people's wood smoke without adequate regulations to protect them.

- Wood-smoke regulations and enforcement vary from state to state. Even within a state, enforcement of wood smoke issues can vary from town to town. Regulations put in place by towns, states, and the federal government have not caught up with the science on the harms of inhaling wood smoke.
- Research has shown that small particles, created by the burning of wood, remain airborne for longer periods of time than larger particles, meaning that they remain available for human inhalation.
- The particles can have a strongly negative effect on human health, causing and exacerbating lung diseases, and triggering cardiovascular events, cancers, and premature deaths. These health events can occur at air pollution levels well below regulatory standards.
- Short-term exposure to wood smoke aggravates lung diseases. It can cause asthma attacks, acute bronchitis, sinusitis, respiratory infections, and cardiac events.
- Long-term exposure to wood smoke can cause reduced lung function, chronic bronchitis, sinusitis, and lung cancer. It also can cause cardiovascular diseases, and cardiac events.
- Raising public awareness about the potential health threats of wood smoke will increase public support for policy measures that provide protections from these risks, and change public attitudes and norms regarding the social acceptability of burning wood. If governments, at all levels, could finally regulate cigarette smoke, after years without regulations, there is hope that eventually governments will better regulate wood smoke so that the public is finally protected.

VI. Recommendations



Recommendations for the Federal Government

- The federal government should adopt stricter wood-smoke standards. The current air standards are not strict enough to protect the public's health, with long-term exposures to PM2.5 causing an increased risk of harm, even at levels below the current air standards. The Clean Air Act requires that the Environmental Protection Agency (EPA) set air quality standards that protect even sensitive populations. The current laws clearly fail to protect human health as required by the Clean Air Act.
- The federal government should be required to test new wood-burning appliances for both their efficiency and emission levels before they are allowed to enter the marketplace. An example of such a failure are the outdoor wood furnaces that entered the marketplace without adequate testing, but which have proven to be harmful to both the environment and human health.
- The federal government should make clear what is allowed to be burned and what is not. Pressure-treated wood, plastics, building debris, and wood containing waxes, adhesives, and other dangerous additives should be banned from use in wood-burning appliances.
- The federal government should increase their education about wood smoke and its harms so that the public is more fully informed and can better protect their health.
- The federal government should require wood-burning appliances to contain a warning that wood smoke may be dangerous to health. Labeling requirements for tobacco products have proven to be effective in educating the public about the dangers of cigarette smoke; the same should be required for wood smoke.



Recommendations for States

- State governments should enact laws that clearly state that wood smoke entering another person's property is against the law, and violations are enforceable by shutting down the offending wood-burning appliance.
- States should use visual smoke passing onto neighbors' properties as proof of harm. Wood-smoke emissions that harm people should be recognized as proof of harm by the designated agency that inspects offending wood-smoke appliances.
- States should make clear to the public which state agencies are empowered to enforce laws to protect those being harmed by other people's wood-smoke emissions. In some states, local health departments are the agencies empowered to enforce these laws.
- States should include wood smoke in their nuisance clauses to better prevent and enforce wood smoke issues.
- States should install enough PM_{2.5} monitors to adequately reflect where wood-smoke emissions actually occur. For instance, although monitoring data from 2008 through 2012 show that Connecticut meets EPA's PM_{2.5} standards, there are only eight PM_{2.5} monitors in the state, and they are not located in areas where wood burning is the most common.
- States should enact wood burning bans when air quality does not meet EPA's health standards for either ozone or particulate levels. Communities that have done so have experienced significant improvements in air quality.
- State websites should include: why wood smoke is harmful to health; why wood smoke regulations should be enforced; and which state, county, or town agency enforces laws on harmful wood-smoke emissions.

THE GROWTH OF RECREATIONAL WOOD BURNING



Recommendations for City, Town, and County Governments

- City, town, and county governments should enact ordinances that clearly state that wood smoke entering another person's property is against the law, and is enforceable by shutting down the offending wood-burning appliance.
- City, town, and county governments should empower their local health departments to be the agency to enforce wood-smoke offenses, and encourage them to shut down wood-burning appliances when wood-smoke emissions harm other people.
- City, town, and county governments should ban outdoor wood furnaces, as they cannot be made safe for the environment or for people who live within half a mile of outdoor wood furnaces. Wood-smoke emissions from outdoor wood furnaces travel for half a mile and can enter all the homes within that area.
- The websites of city, town and county governments should include why wood smoke is harmful to health; why wood smoke regulations should be enforced; and which city, town or county government agency enforces the laws relating to harmful wood-smoke emissions.

Recommendations for Individuals

- Individuals need to understand that wood smoke is dangerous to their health. Individuals should protect themselves and their families from wood-smoke exposures. Pregnant women, infants, children, older adults, and people with pre-existing respiratory or cardiac diseases, diabetes, and breast cancer should avoid all wood-smoke exposures.

THE HARMFUL EFFECTS OF WOOD SMOKE AND



- Individuals should use natural gas-burning appliances instead of wood-burning ones. Even a cleaner or newer wood-burning stove will not necessarily improve the PM levels in your home. The U.S. Department of Energy found that about a third of homes that replaced their wood-burning device did not see indoor air quality improvements. A natural gas stove, if properly vented, will reduce emissions.
- Individuals should avoid burning wood. If they must, they should burn only clean, dry wood. Never burn trash. Most household waste is primarily comprised of plastics, which emit highly toxic compounds. Do not burn building debris, pressure-treated wood, or wood containing waxes, adhesives, or other dangerous additives. Synthetic logs should also be avoided.
- Individuals need to make sure that their wood-smoke emissions are not harming others. If their wood burning is harming others, they need to shut down the wood-burning appliance.
- Individuals should reduce all wood-smoke exposures. If wood smoke enters your home on a regular basis, you and your family need to get out of the smoke. Ask your neighbors to reduce the wood-smoke emissions that are harming you. If that fails, ask your local health department for enforcement help. If others are being harmed by the wood smoke, invite them to join you in asking for enforcement. If all fails, you may consider moving your residence. Obviously, nothing is more important than your family's health.
- Individuals who are experiencing wood smoke in their homes should purchase a HEPA filter while waiting for enforcement. A 2016 study by the Department of Energy found significant benefits from using high-efficiency HEPA air filters to reduce PM from wood smoke in homes. These filters, if properly sized for the volume of space you normally occupy, can reduce indoor particle pollution by as much as 60%.²⁶⁴
- Individuals should work to get their towns to pass ordinances that better protect people from being harmed by other people's wood burning.

VII. Glossary

Acronyms, Abbreviations, and Definitions

ACGIH - American Conference of Governmental Industrial Hygienists

ACHD - Allegheny County Health Department

ATSDR - Agency for Toxic Substances and Disease Registry

AQI - Air Quality Index

BaP - benzo[a]pyrene, a PAH that results from incomplete combustion

BC - black carbon

CAA - Clean Air Act

CCA - chromated copper arsenate

CDC - Centers for Disease Control and Prevention

CFR - Code of Federal Regulations

CNS - Central Nervous System

CO - carbon monoxide

COPD - Chronic Obstructive Pulmonary Disease

CTDEP - Connecticut Department of Environmental Protection

DOE - Department of Energy

DNA adduct - a segment of DNA bound to a cancer-causing chemical

GASP - Group Against Smog & Pollution

HAP - Hazardous Air Pollutant. Also known as toxic air pollutants or air toxics. Pollutants known or suspected to cause cancer or other serious health effects, such as reproductive effects or birth defects, or adverse environmental effects.

IARC - The International Agency for Research on Cancer

NAAQS - National Ambient Air Quality Standards

NAS - National Academy of Science

NIH - National Institutes of Health

NIEHS - National Institute of Environmental Health Sciences, part of NIH

NTP - National Toxicology Program

Open burning - Defined by EPA as smoke that enters the air directly, without first going through a chimney, flue, vent, or other similar path. Includes recreational burning as well as burning brush or other land-clearing debris.

PAH - polycyclic aromatic hydrocarbon; part of a large group of organic compounds with two or more fused aromatic rings

PAH-DNA adducts - Environmental PAH exposures result in PAH-DNA adducts

PM - particulate matter

PM_{2.5} - fine particulate matter (2.5 microns or micrometers)

PM₁₀ - coarse particulate matter (10 microns or micrometers)

Recreational burning - Use of an outdoor fire for warmth or ambiance

SO₂ - sulfur dioxide

USEPA - U.S. Environmental Protection Agency

UFP - Ultrafine particulate matter

VOC - volatile organic compound

W-COPD - COPD associated with wood smoke

WHO - World Health Organization

WSPM - wood smoke particulate matter

T-COPD - COPD associated with tobacco smoking

µg/m³ - The concentration of an air pollutant (e.g., PM) in micrograms (one-millionth of a gram) per cubic meter of air

VIII. Endnotes

- ¹ Kelly FJ, Fussell JC. Air pollution and public health: emerging hazards and improved understanding of risk. *Environmental Geochemistry and Health*. 2015;37(4):631-649.
- ² Boman BC, Forsberg AB, Järholm BG. Adverse health effects from ambient air pollution in relation to residential wood combustion in modern society. *Scand J Work Environ Health* 2003;29(4):251–260; Stockfelt L, Sallsten G, Olin AC, et al. Effects on airways of short-term exposure to two kinds of wood smoke in a chamber study of healthy humans. *Inhalation toxicology*. 2012 Jan 1;24(1):47-59.
- ³ Kelly FJ, Fussell JC. Air pollution and public health: emerging hazards and improved understanding of risk. *Environmental Geochemistry and Health*. 2015;37(4):631-649.
- ⁴ Australian Air Quality Group. Published Literature on Woodsmoke and Cancer. <http://woodsmoke.3sc.net/cancer>
- ⁵ Black C, Gerriets J, Fontaine J. Early Life Wildfire Smoke Exposure is Associated with Immune Dysregulation and Lung Function Decrements in Adolescence. *Am J Respir Cell Mol Biol*. 2017 Feb 16.
- ⁶ White AJ, Teitelbaum SL, Stellman SD, et al. Indoor air pollution exposure from use of indoor stoves and fireplaces in association with breast cancer: a case-control study. *Environmental Health*. 2014;13:108.
- ⁷ Hu H, Dailey AB, Kan H, Xu X. The effect of atmospheric particulate matter on survival of breast cancer among US females. *Breast Cancer Res Treat*. 2013 May;139(1):217-26; Iwai K, Mizuno S, Miyasaka Y, et al. Correlation between suspended particles in the environmental air and causes of disease among inhabitants: cross-sectional studies using the vital statistics and air pollution data in Japan. *Environ Res* 2005;99:106–17; Tagliabue G, Borgini A, Tittarelli A, et al. Atmospheric fine particulate matter and breast cancer mortality: a population-based cohort study. *BMJ Open*. 2016;6(11).
- ⁸ Lim SS, Vos T, Flaxman AD, et al. A comparative risk assessment of burden of disease and injury attributable to 67 risk factors and risk factor clusters in 21 regions, 1990-2010: a systematic analysis for the Global Burden of Disease Study 2010. *Lancet* 2012;380:2224-2260.
- ⁹ Di Q, Wang Y, Zanobetti A, et al. Air pollution and mortality in the Medicare population. *N. Engl. J. Med*. 2017;376:2513–2522.
- ¹⁰ McDonald, JD, Zielinska B, Fujita EM, et al. Fine particle and gaseous emission rates from residential wood combustion, *Environ. Sci. Technol*. 2000;34:2080-2091.
- ¹¹ Naeher L, Brauer M, Lipsett M, et al. Woodsmoke Health Effects: A Review. *Inhalation Toxicology*, 2007;19(1), 67–106.
- ¹² Larson T and Koenig J. Wood smoke: Emissions and Noncancer Respiratory Effects. *Annu. Rev. Public Health*. 1994. 15:133-56.
- ¹³ Annual exposures < 10 µg/m³, below the current annual PM2.5 NAAQS of 12 µg/m³; short-term exposure < 30 µg/m³, below the current daily PM2.5 NAAQS of 35 µg/m³.
- ¹⁴ Shi L, Zanobetti A, Kloog I, et al. 2016. Low-concentration PM2.5 and mortality: estimating acute and chronic effects in a population-based study. *Environ Health Perspect* 124:46–52.
- ¹⁵ American Lung Association. State of the Air 2017. <http://www.lung.org/assets/documents/healthy-air/state-of-the-air/state-of-the-air-2017.pdf>
- ¹⁶ USEPA. Strategies for reducing residential wood smoke. 2013. Publication No. EPA-456/B-13-001.
- ¹⁷ Kotchenruther, R. Source apportionment of PM2.5 at multiple Northwest U.S. sites: Assessing regional winter wood smoke impacts from residential wood combustion. *Atmospheric Environment* 2016;142:210e219.
- ¹⁸ CT DEP. Bureau of Air Management. February 7, 2011. Evaluation of Wood Smoke Contribution to Particle Matter in Connecticut. www.nescaum.org/documents/ctdep_woodsmokefinalreport-20110207.pdf
- ¹⁹ Mazurek, M. Final Report: Polar Organic Compounds in Fine Particles from the New York, New Jersey, and Connecticut Regional Airshed. EPA Grant Number: R832165.
- ²⁰ Ward T, Lange T. The impact of wood smoke on ambient PM2.5 in northern Rocky Mountain valley communities. *Environ Pollut*. 2010 Mar;158(3):723-9.
- ²¹ Scauzillo S. Why your fireplace is ruining the environment. *San Gabriel Valley Tribune*. Jan 30, 2015: August 30, 2017. <https://www.sgvtribune.com/2015/01/30/why-your-fireplace-is-ruining-the-environment/>
- ²² USEPA. Final Rule: Determinations of Attainment by the Attainment Date, Determinations of Failure to Attain by the Attainment Date and Reclassification for Certain Nonattainment Areas for the 2006 24-Hour Fine Particulate Matter National Ambient Air Quality Standards. 2017. https://www.epa.gov/sites/production/files/2017-05/documents/fact_sheet_2006_pm2_5_naaqs_moderate_areas_final_0.pdf
- ²³ WHO Air quality guidelines for particulate matter, ozone, nitrogen dioxide and sulfur dioxide. Global update 2005; Summary of risk

THE GROWTH OF RECREATIONAL WOOD BURNING

- assessment. 2005. Available at http://apps.who.int/iris/bitstream/10665/69477/1/WHO_SDE_PHE_OEH_06.02_eng.pdf; Accessed June 13, 2017; Ole Raaschou-Nielsen from the Danish Cancer Society Research Centre in Copenhagen. <http://www.nydailynews.com/life-style/health/air-pollution-boosts-risks-lung-cancer-heart-failure-research-article-1.1395110>
- ²⁴ Raaschou-Nielsen O, Andersen ZJ, Beelen R, et al. Air pollution and lung cancer incidence in 17 European cohorts: prospective analyses from the European Study of Cohorts for Air Pollution Effects (ESCAPE) *Lancet Oncol.* 2013;14:813–822.
- ²⁵ Traboulsi H, Guerrina N, Iu M, et al. Inhaled Pollutants: The Molecular Scene behind Respiratory and Systemic Diseases Associated with Ultrafine Particulate Matter. Reynolds PR, Bikman BT, eds. *International Journal of Molecular Sciences.* 2017;18(2):243.
- ²⁶ Heinzerling A, Hsu J, Yip F. Respiratory Health Effects of Ultrafine Particles in Children: A Literature Review. *Water, air, and soil pollution.* 2016;227:32.
- ²⁷ Baldauf RW, Devlin RB, Gehr P, et al. Ultrafine Particle Metrics and Research Considerations: Review of the 2015 UFP Workshop. Brugge D, ed. *International Journal of Environmental Research and Public Health.* 2016;13(11):1054.
- ²⁸ HEI Review Panel on Ultrafine Particles. HEI Perspectives 3. Health Effects Institute; Boston, MA: 2013. Understanding the health effects of ambient ultrafine particles.
- ²⁹ Baldauf RW, Devlin RB, Gehr P, et al. Ultrafine Particle Metrics and Research Considerations: Review of the 2015 UFP Workshop. Brugge D, ed. *International Journal of Environmental Research and Public Health.* 2016;13(11):1054.
- ³⁰ Ravindra K, Sokhi R. and Grieken RV. Atmospheric polycyclic aromatic hydrocarbons: Source attribution, emission factors and regulation, *Atmos. Environ.* 2008;42:2895–2921.
- ³¹ Poulain L, Iinuma Y, Muller K, et al. Diurnal variations of ambient particulate wood burning emissions and their contribution to the concentration of polycyclic aromatic hydrocarbons (PAHs) in Seiffen, Germany. *Atmos Chem. Phys.* 2011, 11 (24), 12697–12713; Watts R, Drago R, Merrill, R, et al. Wood smoke impacted air: mutagenicity and chemical analysis of ambient air in a residential area of Juneau, Alaska, *JAPCA*, 38:5 pp. 652-660.
- ³² ACGIH (American Conference of Governmental Industrial Hygienists). Polycyclic aromatic hydrocarbons (PAHs) biologic exposure indices (BEI) Cincinnati. OH: American Conference of Governmental Industrial Hygienists; 2005.
- ³³ Boström C-E, Gerde P, Hanberg A, et al. Cancer risk assessment, indicators, and guidelines for polycyclic aromatic hydrocarbons in the ambient air. Special Report. *Environ. Health Perspectives.* 2002;110(Suppl 3):451-488.
- ³⁴ Ravindra K, Sokhi R. and Grieken RV. Atmospheric polycyclic aromatic hydrocarbons: Source Attribution, emission factors and regulation, *Atmos. Environ.* 2008;42:2895–2921; Bari MA, Baumbach G, Kuch B, Scheffknecht G. Particle-phase concentrations of polycyclic aromatic hydrocarbons in ambient air of rural residential areas in southern Germany. *Air Quality, Atmosphere, & Health.* 2010;3(2):103-116.
- ³⁵ Jenkins BM, Jones AD, Turn SQ, Williams RB. Emission factors for polycyclic aromatic hydrocarbons from biomass burning. *Environmental Science and Technology* 1996 30:2462–2469.
- ³⁶ <https://www.epa.gov/sites/production/files/2016-09/documents/polycyclic-organic-matter.pdf>
- ³⁷ Poirier, MC. Linking DNA adduct formation and human cancer risk in chemical carcinogenesis. *Environ. Mol. Mutagen.* 2016, 57, 499–507; Farmer PB. Molecular epidemiology studies of carcinogenic environmental pollutants—Effects of polycyclic aromatic hydrocarbons (PAHs) in environmental pollution on exogenous and oxidative DNA damage. *Mutat. Res. Rev. Mutat. Res.* 2003, 544, 397–402.
- ³⁸ Rogge WF, Hildemann LM, Mazurek MA, et al. Sources of fine organic aerosol. 9. Pine, oak and synthetic log combustion in residential fireplaces. *Environ Sci Technol.* 1998, 32: 13-22; Wolfgang, FR, Hildemann LM, Mazurek M, et al. Sources of fine organic aerosol. Pine, oak, and synthetic log combustion in residential fireplaces. 1998. *Environ. Sci. Technol.* 32:13-22.
- ³⁹ Gullett BK, Touati A, Hays MD: PCDD/F, PCB, HxCBz, PAH, and PM emission factors for fireplace and woodstove combustion in the San Francisco Bay region. *Environ Sci Technol.* 2003, 37: 1758-1765.
- ⁴⁰ Rogge W, Hildemann L, Mazurek M, et al. Sources of Fine Organic Aerosol. 9. Pine, Oak, and Synthetic Log Combustion in Residential Fireplaces *Environ. Sci. & Technol.* 1998 32 (1), 13-22
- ⁴¹ Statista. Percentage of total firelog sales in the United States in 2015, by leading brands. Accessed Feb 7, 2017. <https://www.statista.com/statistics/193878/share-of-us-firelog-sales-in-2009-and-2010-by-brand/>
- ⁴² <https://store.duraflame.com/about-duraflame/>
- ⁴³ Li VS, Rosenthal S: Content and emission characteristics of Artificial Wax Firelogs. Omni Environmental Services for EPA Reg 5/Environment Canada, 2006.
- ⁴⁴ Greenwoodproducts.com, <http://www.goodwoodproducts.com/knowwhat.html>
- ⁴⁵ White AJ, Teitelbaum SL, Stellman SD, et al. Indoor air pollution exposure from use of indoor stoves and fireplaces in association with breast cancer: a case-control study. *Environmental Health.* 2014;13:108.

THE HARMFUL EFFECTS OF WOOD SMOKE AND

- ⁴⁶ ATSDR. ToxFAQs™ for 1,3-Butadiene. Available at <https://www.atsdr.cdc.gov/PHS/PHS.asp?id=457&tid=81>
- ⁴⁷ <https://www.epa.gov/sites/production/files/2016-09/documents/benzene.pdf>. U.S. Environmental Protection Agency. Integrated Risk Information System (IRIS) on Benzene. National Center for Environmental Assessment, Office of Research and Development, Washington, DC. 2009.
- ⁴⁸ <https://www.atsdr.cdc.gov/toxprofiles/tp3-c6.pdf>
- ⁴⁹ McDonald J, Zielinska B, Fujita E, et al. Fine Particle and Gaseous Emission Rates from Residential Wood Combustion. *Environmental Science & Technology* 2000 34 (11), 2080-2091.
- ⁵⁰ Gustafson P, Barregard L, Strandberg B, Sällsten G. The impact of domestic wood burning on personal, indoor and outdoor levels of 1,3-butadiene, benzene, formaldehyde and acetaldehyde. *J Environ Monit.* 2007 Jan;9(1):23-32.
- ⁵¹ Oregon Department of Environmental Quality. Air Toxics monitoring in Klamath Falls. <http://www.oregon.gov/deq/FilterDocs/FSKlamathFallsAirToxics.pdf>
- ⁵² Feng Z, Hu W, Hu Y, Tang MS. Acrolein is a major cigarette-related lung cancer agent: Preferential binding at p53 mutational hotspots and inhibition of DNA repair. *Proc Natl Acad Sci.* 2006; 103: 15404–15409.
- ⁵³ <https://www.epa.gov/sites/production/files/2016-09/documents/formaldehyde.pdf>
- ⁵⁴ https://toxtown.nlm.nih.gov/text_version/chemicals.php?id=14
- ⁵⁵ https://www.turi.org/TURI_Publications/TURI_Chemical_Fact_Sheets/Formaldehyde_Fact_Sheet/Formaldehyde_Facts/Health_and_Environment
- ⁵⁶ Spiess PC, Kasahara D, Habibovic A, et al. Acrolein exposure suppresses antigen-induced pulmonary inflammation. *Respir Res.* 2013 14: 107; Liu X, Zheng W, Sivasankar MP. Acute Acrolein Exposure Induces Impairment of Vocal Fold Epithelial Barrier Function. *Chen L-M, ed. PLoS ONE.* 2016;11(9):e0163237.
- ⁵⁷ DeJarnett N, Conklin DJ, Riggs DW, et al. Acrolein Exposure Is Associated With Increased Cardiovascular Disease Risk. *Journal of the American Heart Association: Cardiovascular and Cerebrovascular Disease.* 2014;3(4).
- ⁵⁸ Hristova, Milena, et al. “The Tobacco Smoke Component, Acrolein, Suppresses Innate Macrophage Responses by Direct Alkylation of c-Jun N-Terminal Kinase.” *American Journal of Respiratory Cell and Molecular Biology* 46.1 (2012): 23–33. PMC. Web. 16 Jan. 2018.
- ⁵⁹ Tully M, Shi R. New Insights in the Pathogenesis of Multiple Sclerosis—Role of Acrolein in Neuronal and Myelin Damage. *International Journal of Molecular Sciences.* 2013;14(10):20037-20047.
- ⁶⁰ USEPA. Update to An Inventory of Sources and Environmental Releases of Dioxin-Like Compounds in the United States for the Years 1987, 1995, and 2000 (2013, External Review Draft). USEPA, Washington, DC, EPA/600/R-11/005A, 2013.
- ⁶¹ USEPA. Public Review Draft: Exposure and Human Health Reassessment of 2,3,7,8-Tetrachlorodibenzo-p-Dioxin (TCDD) and Related Compounds, Part I, Vol. 2: Sources of Dioxin-Like Compounds in the United States; EPA/600/P-00/001Bb; National Center for Environmental Assessment: Washington, DC; September 2000; Gullett B., Touati A, and Hays M. PCDD/F, PCB, HxCBz, PAH, and PM emission factors for fireplace and woodstove combustion in the San Francisco Bay region. *Environmental science & technology* 37.9 (2003): 1758-1765.
- ⁶² Dioxins. Technical Information for California Health Officials. <http://www.kadena.af.mil/Portals/40/documents/Okinawa-City-Soccer-Field-Excavation/AFD-140214-006.pdf>
- ⁶³ Tame Nigel, Dlugogorski B, and Kennedy E. Formation of dioxins and furans during combustion of treated wood. *Progress in Energy and Combustion Science* 2007;33.4:384-408.
- ⁶⁴ Murray CJ, Lopez AD. Alternative projections of mortality and disability by cause 1990–2020: global burden of disease study. *Lancet* 1997;349:1498-1504.
- ⁶⁵ NC Oswald, VC Medvei. Chronic bronchitis: the effect of cigarette-smoking. *Lancet*, 269 (1955), pp. 843-844.
- ⁶⁶ Salvi SS, Barnes PJ. Chronic obstructive pulmonary disease in non-smokers. *Lancet* 2009;374:733-743.
- ⁶⁷ Sood A, Petersen H, Blanchette C, et al. Wood smoke-associated chronic obstructive pulmonary disease (COPD)—underappreciated in the United States? *Am J Respir Crit Care Med*, 179 (2009), p. A4742; Orozco-Levi M, Garcia-Aymerich J, Villar J, et al. Wood smoke exposure and risk of chronic obstructive pulmonary disease. *Eur Respir J.* 2006 Mar;27(3):542-6; Gan WQ, FitzGerald JM, Carlsen C, et al. Associations of ambient air pollution with chronic obstructive pulmonary disease hospitalization and mortality. *American Journal of Respiratory and Critical Care Medicine.* 2013;187:721-7.
- ⁶⁸ Sood A, Petersen H, Blanchette CM, et al. Wood Smoke Exposure and Gene Promoter Methylation Are Associated with Increased Risk for COPD in Smokers. *American Journal of Respiratory and Critical Care Medicine.* 2010;182(9):1098-1104.
- ⁶⁹ Torres-Duque CA, García-Rodríguez MC, González-García M. Is Chronic Obstructive Pulmonary Disease Caused by Wood Smoke a Different Phenotype or a Different Entity? *Arch Bronconeumol.* 2016;52(8):425-31.
- ⁷⁰ Camp PG, Ramirez-Venegas A, Sansores RH, et al. COPD phenotypes in biomass smoke- versus tobacco smoke-exposed Mexican women.

THE GROWTH OF RECREATIONAL WOOD BURNING

- Eur Respir J 2014; 43: 725–734; González-García M, Maldonado D, Torres-Duque C, et al. Tomographic and functional differences between severe chronic obstructive pulmonary disease related to wood smoke and tobacco smoke. *J Bras Pneumol* 2013; 39: 147–154.
- ⁷¹ USEPA. Wood smoke awareness kit. Fast facts. https://www.epa.gov/sites/production/files/2016-11/documents/kit_2_fast_facts.pdf. Accessed June 2, 2018.
- ⁷² CDC. Most Recent Asthma Data. https://www.cdc.gov/asthma/most_recent_data.htm
- ⁷³ Azalim SP, Camargos P, Alves A, et al. Exposure to environmental factors and relationship to allergic rhinitis and/or asthma. *Annals of Agricultural and Environmental Medicine*. 2014;21(1):59–63; Asher I, Pearce N. Global burden of asthma among children. *International Journal of Tuberculosis and Lung Disease*. 2014;18(11):1269–1278.
- ⁷⁴ USEPA, Integrated Science Assessment for Particulate Matter, December 2009. EPA 600/R-08/139F.
- ⁷⁵ Paulin L, Hansel N. Particulate air pollution and impaired lung function. *F1000Research*. 2016;5:F1000 Faculty Rev-201.
- ⁷⁶ Danielsen PH, Møller P, Jensen KA, et al. Oxidative stress, DNA damage and inflammation induced by ambient air and wood smoke particulate matter in human A549 and THP-1 cell lines. *Chem Res Toxicology* 2011 Feb 18; 24: 168-84; Clean Air for New South Wales. Submission from Asthma Foundation Queensland and New South Wales. Raineri, Tanya. <http://www.epa.nsw.gov.au/resources/air/submissions2017/Asthma-Foundation-Queensland-and-NSW.pdf>
- ⁷⁷ Allen RW, Mar T, Koenig J, Liu LJ, et al. Changes in lung function and airway inflammation among asthmatic children residing in a woodsmoke-impacted urban area. *Inhal. Toxicol*. 2008;20(4):423-433.
- ⁷⁸ Young MT, Sandler DP, DeRoo LA, et al. Ambient air pollution exposure and incident adult asthma in a nationwide cohort of U.S. women. *Am J Respir Crit Care Med* 2014;190:914–921.
- ⁷⁹ Mirabelli MC, Vaidyanathan A, Flanders WD, Qin X, Garbe P. Outdoor PM_{2.5}, ambient air temperature, and asthma symptoms in the past 14 days among adults with active asthma. *Environ Health Perspect* 2016;124:1882–1890.
- ⁸⁰ <http://foxcitiesallergists.com/how-to-avoid-the-five-surprising-allergy-asthma-triggers-that-can-spoil-summer/>
- ⁸¹ USEPA. Particle Pollution and Your Patients' Health. Available at <https://www.epa.gov/particle-pollution-and-your-patients-health/course-outlinekey-points>. Accessed June 2018.
- ⁸² Brook RD, Rajagopalan S, Pope CA, et al. Particulate matter air pollution and cardiovascular disease: an update to the scientific statement from the American Heart Association. *Circulation*. 2010;121:2331–2378; Peters A, von Klot S, Heier M, et al. Exposure to traffic and the onset of myocardial infarction. *N Engl J Med*. 2004;351:1721–1730; Pope CA, Muhlestein JB, May HT, et al. Ischemic heart disease events triggered by short-term exposure to fine particulate air pollution. *Circulation*. 2006;114:2443–2448; Bhaskaran K, Hajat S, Armstrong B, et al. The effects of hourly differences in air pollution on the risk of myocardial infarction: case crossover analysis of the MINAP database. *BMJ*. 2011;343:d5531; Nawrot TS, Perez L, Künzli N. Public health importance of triggers of myocardial infarction: a comparative risk assessment. *Lancet*. 2011;377:732–740.
- ⁸³ USEPA, Integrated Science Assessment for Particulate Matter, December 2009. EPA 600/R-08/139F
- ⁸⁴ Dockery DW, Pope CA, Xu X, et al. An Association between Air Pollution and Mortality in Six U.S. Cities. *N Engl J Med*. 1993;329:1753–1759; Hoek G, Brunekreef B, Goldbohm S, et al. Association between mortality and indicators of traffic-related air pollution in the Netherlands: a cohort study. *Lancet*. 2002;360:1203–1209; Pope CA, Burnett RT, Thurston GD, et al. Cardiovascular mortality and long-term exposure to particulate air pollution: epidemiological evidence of general pathophysiological pathways of disease. *Circulation*. 2004;109:71–77; Pope CA, Muhlestein JB, May HT, et al. Ischemic heart disease events triggered by short-term exposure to fine particulate air pollution. *Circulation*. 2006;114:2443–2448; Miller KA, Siscovick DS, Sheppard L, et al. Long-term exposure to air pollution and incidence of cardiovascular events in women. *N Engl J Med*. 2007; 356:447–458.
- ⁸⁵ Brook R, Rajagopalan S, Pope C, et al. Particulate Matter Air Pollution and Cardiovascular Disease: An Update to the Scientific Statement From the American Heart Association. *Circulation*, 2010;121(21), 2331–2378;
- ⁸⁶ Haikerwal A, Akram M, Del Monaco A, et al. Impact of Fine Particulate Matter (PM_{2.5}) Exposure During Wildfires on Cardiovascular Health Outcomes. *Journal of the American Heart Association: Cardiovascular and Cerebrovascular Disease*. 2015;4(7):e001653.
- ⁸⁷ Bai N, Khazaei M, van Eeden SF, Laher I: The pharmacology of particulate matter air pollution-induced cardiovascular dysfunction. *Pharmacol Ther* 2007, 113: 16–29; Schulz H, Harder V, Ibald-Mulli A, et al. Cardiovascular effects of fine and ultrafine particles. *J Aerosol Med* 2005, 18: 1–22.
- ⁸⁸ Qiu H, Sun S, Tsang H, Wong CM. Fine particulate matter exposure and incidence of stroke: A cohort study in Hong Kong. *Neurology*. 2017 May 2;88(18):1709-1717.
- ⁸⁹ USEPA, National Air Toxics Assessment. <https://www.epa.gov/national-air-toxics-assessment>
- ⁹⁰ IARC (International Agency for Research on Cancer) Household use of solid fuels and high-temperature frying. *IARC Monogr Eval Carcinog Risks Hum*.2010;95:1–430.

THE HARMFUL EFFECTS OF WOOD SMOKE AND

- ⁹¹ IARC: Outdoor air pollution a leading environmental cause of cancer deaths. 17 October 2013. https://www.iarc.fr/en/media-centre/iarcnews/pdf/pr221_E.pdf
- ⁹² IARC. IARC Monographs on the Evaluation of Carcinogenic Risks to Humans. VOLUME 92 Some Non-heterocyclic Polycyclic Aromatic Hydrocarbons and Some Related Exposures. 2010. <https://monographs.iarc.fr/ENG/Monographs/vol92/mono92.pdf>
- ⁹³ Boström C-E, Gerde P, Hanberg A, et al. Cancer risk assessment, indicators, and guidelines for polycyclic aromatic hydrocarbons in the ambient air. *Environmental Health Perspectives*. 2002;110(Suppl 3):451-488
- ⁹⁴ Gustafson P, Ostman C, Sällsten G. Indoor levels of polycyclic aromatic hydrocarbons in homes with or without wood burning for heating. *Environ Sci Technol*. 2008;42:5074-5080.
- ⁹⁵ Bari MA, Baumbach G, Kuch B, Scheffknecht G. Particle-phase concentrations of polycyclic aromatic hydrocarbons in ambient air of rural residential areas in southern Germany. *Air Quality, Atmosphere, & Health*. 2010;3(2):103-116.
- ⁹⁶ Gustafson P, Barregard L, Strandberg B, Sällsten G. The impact of domestic wood burning on personal, indoor and outdoor levels of 1,3-butadiene, benzene, formaldehyde and acetaldehyde. *J Environ Monit*. 2007;9:23-32.
- ⁹⁷ IARC. Arsenic and Arsenic Compounds. <http://monographs.iarc.fr/ENG/Monographs/vol100C/mono100C-6.pdf>
- ⁹⁸ McMahon CK, Bush PB, Woolson EA. Release of copper, chromium, and arsenic from burning wood treated with preservatives, APCA 4 1985. 56-72.
- ⁹⁹ Peters HA, Croft WA, Woolson EA, et al. Seasonal Arsenic Exposure From Burning Chromium-Copper-Arsenate-Treated Wood. *JAMA*. 1984;251(18):2393-2396.
- ¹⁰⁰ Maykut J, Lewtas E, Kim T.V. Larson, Source Apportionment of PM_{2.5} at an Urban IMPROVE site in Seattle, WA, *Environ. Sci. Technol*. 37 2003 5135-5142
- ¹⁰¹ Wasson SJ, Linak WP, Gullett K, et al. Emissions of chromium, copper, arsenic, and PCDDs/Fs from open burning of CCA-treated wood. *Environ Sci Technol*. 2005 Nov 15;39(22):8865-76.
- ¹⁰² Ferlay J, Shin HR, Bray F, Forman D, Mathers C, Parkin DM. Estimates of worldwide burden of cancer in 2008: GLOBOCAN 2008. *Int J Cancer*. 2010;127(12):2893-917.
- ¹⁰³ Cufari ME, Proli C, Phull M, et al., editors. Increasing Incidence of Non-Smoking Lung Cancer: Presentation of Patients with Early Disease to a Tertiary Institution in the UK. 16TH WORLD CONFERENCE ON LUNG CANCER; 2015 September 6-9; Denver, CO: International Association of the Study of Lung Cancer (IASLC); Pelosof L, Ahn C, Horn L, et al., editors. Increasing Incidence of Never Smokers in Non Small Cell Lung Cancer (NSCLC) Patients. 16TH WORLD CONFERENCE ON LUNG CANCER; 2015 September 6-9; Denver, CO: IASLC.
- ¹⁰⁴ Herbst RS, Heymach JV, Lippman SM. Lung cancer. *N Engl J Med*. 2008;359(13):1367-80.
- ¹⁰⁵ Loomis D, Grosse Y, Lauby-Secretan B, et al. The International Agency for Research on Cancer Monograph Working Group IARC. The carcinogenicity of outdoor air pollution. *Lancet Oncol*. 2013;14:1262-1263.
- ¹⁰⁶ Hamra GB, Guha N, Cohen A, et al. Outdoor Particulate Matter Exposure and Lung Cancer: A Systematic Review and Meta-Analysis. *Environ Health Perspect*. 2014; 122: 906-911.
- ¹⁰⁷ Mazzone PJ, Chagoya JC, Arroliga AC. Cause and Effect in Lung Cancer: Fueling the Fire, *Chest*, Volume 128, Issue 1, 2005, Pages 6-8.
- ¹⁰⁸ XD Dai, CY Lin, XW Sun, et al. The etiology of lung cancer in nonsmoking females in Harbin, China. *Lung Cancer*, 1996 14 (suppl 1) pp. S85-S91; Hernández-Garduño E, Brauer M, Pérez-Neria J, et al. Wood smoke exposure and lung adenocarcinoma in non-smoking Mexican women *Int J Tuberc Lung Dis* 2004;8 377-383; J Lissowska, A Bardin-Mikolajczak, T Fletcher, et al. Lung cancer and indoor pollution from heating and cooking with solid fuels: the IARC international multicentre case-control study in Eastern/Central Europe and the United Kingdom. *Am J Epidemiol*, 2005 162:326-333.
- ¹⁰⁹ Delgado J, Martínez LM, Sanchez TT, et al. Lung cancer pathogenesis associated with wood smoke exposure. *Chest* 2005;128:124-131.
- ¹¹⁰ Hosgood HD, Boffetta P, Greenland S, et al. In-Home Coal and Wood Use and Lung Cancer Risk: A Pooled Analysis of the International Lung Cancer Consortium. *Environmental Health Perspectives*. 2010;118(12):1743-1747.
- ¹¹¹ Yu YH, Liao CC, Hsu WH, et al. Increased lung cancer risk among patients with pulmonary tuberculosis: a population cohort study. *J Thorac Oncol*. 2011;6(1):32-7; Hernandez-Garduno E, Brauer M, Perez-Neria J, Vedal S. Wood smoke exposure and lung adenocarcinoma in non-smoking Mexican women. *Int J Tuberc Lung Dis*. 2004;8(3):377-83.
- ¹¹² Zelikoff JT, Chen LC, Cohen MD, Schlesinger RB. The toxicology of inhaled woodsmoke. *J Toxicol Environ Health B Crit Rev*. 2002;5(3):269-82.
- ¹¹³ Kim KH, Jahan SA, Kabir E, Brown RJ. A review of airborne polycyclic aromatic hydrocarbons (PAHs) and their human health effects. *Environ Int*. 2013 Oct;60:71-80.
- ¹¹⁴ Gray JM, Rasanayagam S, Engel C, Rizzo J. State of the evidence 2017: an update on the connection between breast cancer and the environment. *Environmental Health*. 2017;16:94.

THE GROWTH OF RECREATIONAL WOOD BURNING

- ¹¹⁵ Boström C-E, Gerde P, Hanberg A, et al. Cancer risk assessment, indicators, and guidelines for polycyclic aromatic hydrocarbons in the ambient air. *Environmental Health Perspectives*. 2002;110(Suppl 3):451-488; IARC: IARC Monographs on the Evaluation of Carcinogenic Risks to Humans/WHO, IARC. 2010, vol. 92, Some non-heterocyclic polycyclic aromatic hydrocarbons and some related exposures, IARC Working Group on the Evaluation of Carcinogenic Risks to Humans.
- ¹¹⁶ Morris JJ, Seifter E. The role of aromatic hydrocarbons in the genesis of breast cancer. *Med Hypoth*. 1992;38:177-184.
- ¹¹⁷ Shmuel S, White AJ, Sandler DP. Residential exposure to vehicular traffic-related air pollution during childhood and breast cancer risk. *Environ Res*. 2017 Nov;159:257-263; IARC. Household use of solid fuels and high-temperature frying. 2010. *Monog Eval Carcinog Risk Hum* 95:7-430. http://www.who.int/indoorair/guidelines/hhfc/IARC_monographs_Vol.95.pdf
- ¹¹⁸ White AJ, Chen J, McCullough LE, et al. Polycyclic Aromatic Hydrocarbon (PAH)-DNA Adducts and Breast Cancer: Modification by Gene Promoter Methylation in a Population-Based Study. *Cancer Causes & Control: CCC*. 2015;26(12):1791-1802.
- ¹¹⁹ Pedersen M, Wichmann J, Autrup H, et al. Increased micronuclei and bulky DNA adducts in cord blood after maternal exposures to traffic-related air pollution. *Environ Res* 2009 109(8):1012-1020.
- ¹²⁰ Gammon MD, Sagiv SK, Eng SM, et al. Polycyclic aromatic hydrocarbon-DNA adducts and breast cancer: a pooled analysis. *Arch Environ Health* 2004 59(12):640-649.
- ¹²¹ Burdick A, Davis J, Liu K. Benzo(a)pyrene Quinones Increase Cell Proliferation, Generate Reactive Oxygen Species, and Transactivate the Epidermal Growth Factor Receptor in Breast Epithelial Cells. *Cancer Research* 2003;63:22.
- ¹²² Jingyu G., Yi X, Weiwei J, et al. Effects of exposure to benzo[a]pyrene on metastasis of breast cancer are mediated through ROS-ERK-MMP9 axis signaling. *Toxicology Letters* 2015: 234, Issue 3: 201-210.
- ¹²³ Great Lakes Commission. 2012. Assessment of Benzo(a)pyrene Emissions in the Great Lakes Region. https://www3.epa.gov/ttnchie1/conference/ei20/session10/asoehl_pres.pdf. Accessed June 3, 2018.
- ¹²⁴ Perera FP, Estabook A, Hewer A, et al. Carcinogen-DNA Adducts in Human Breast-Tissue. *Cancer Epidemiology Biomarkers & Prevention*. 1995;4(3):233-238; Rundle A, Tang DL, Hibshoosh H, et al. The relationship between genetic damage from polycyclic aromatic hydrocarbons in breast tissue and breast cancer. *Carcinogenesis*. 2000;21(7):1281-1289; Gammon MD, Sagiv SK, Eng SM, Shantakumar S, et al. Polycyclic aromatic hydrocarbon-DNA adducts and breast cancer: a pooled analysis. *Arch Environ Health*. 2004;59(12):640-649; Gammon MD, Santella RM, Neugut AI, et al. Environmental toxins and breast cancer on Long Island. I. Polycyclic aromatic hydrocarbon DNA adducts. *Cancer Epidemiology Biomarkers & Prevention*. 2002;11(8):677-685.
- ¹²⁵ White AJ, Teitelbaum SL, Stellman SD, et al. Indoor air pollution exposure from use of indoor stoves and fireplaces in association with breast cancer: a case-control study. *Environmental Health*. 2014;13:108.
- ¹²⁶ Gammon MD, Santella RM, Neugut AI. Environmental toxins and breast cancer on Long Island. I. Polycyclic aromatic hydrocarbon DNA adducts. *Cancer Epidemiol Biomark Prev*. 2002;11:677-685.
- ¹²⁷ White A and Sandler D. Indoor Wood-Burning Stove and Fireplace Use and Breast Cancer in a Prospective Cohort Study. *Environ Health Perspect* 2017; 125(7).
- ¹²⁸ Hu H, Dailey AB, Kan H, Xu X. The effect of atmospheric particulate matter on survival of breast cancer among US females. *Breast Cancer Res Treat*. 2013 May;139(1):217-26.
- ¹²⁹ Iwai K, Mizuno S, Miyasaka Y, et al. Correlation between suspended particles in the environmental air and causes of disease among inhabitants: cross-sectional studies using the vital statistics and air pollution data in Japan. *Environ Res* 2005;99:106-17; Tagliabue G, Borgini A, Tittarelli A, et al. Atmospheric fine particulate matter and breast cancer mortality: a population-based cohort study. *BMJ Open*. 2016;6(11); Hung L-J, Tsai S-S, Chen P-S, et al. Traffic air pollution and risk of death from breast cancer in Taiwan: fine particulate matter (PM2.5) as a proxy marker. *Aerosol Air Qual Res* 2012 12:275-282.
- ¹³⁰ WCRF/AICR Expert Report. Food, Nutrition, Physical Activity and the Prevention of Cancer: A Global Perspective 2007.
- ¹³¹ White A, Bradshaw P, Herring AH, et al. Exposure to multiple sources of polycyclic aromatic hydrocarbons and breast cancer incidence. *Environ Int*. 2016;89:185-192.
- ¹³² Humberto P, Steck S, Bradshaw P. et al. Grilled, Barbecued, and Smoked Meat Intake and Survival Following Breast Cancer, *JNCI: Journal of the National Cancer Institute*, 2017:109, Issue 6.
- ¹³³ Phillips DH. Polycyclic aromatic hydrocarbons in the diet. *Mutat Res Toxicol Environ Mutagen*. 1999;443(1-2):139-147.
- ¹³⁴ Larsson BK. Formation of polycyclic aromatic hydrocarbons during the smoking and grilling of food. *Prog Clin Biol Res*. 1986;206:169-180.
- ¹³⁵ Stumpe-Visna I, Bartkevics V, Kukare A, Morozovs A. Polycyclic aromatic hydrocarbons in meat smoked with different types of wood. *Food Chem*. 2008;1103:794-797.
- ¹³⁶ Forsberg ND, Stone D, Harding A, et al. Effect of Native American fish smoking methods on dietary exposure to polycyclic aromatic hydrocarbons and possible risks to human health. *Journal of agricultural and food chemistry*. 2012;60(27):6899-6906.
- ¹³⁷ University of Toronto Laboratory Medicine and Pathobiology. Is Type 2 Diabetes an Autoimmune Disease? July 17, 2016.

THE HARMFUL EFFECTS OF WOOD SMOKE AND

- <http://www.IMP.utoronto.ca/news/news/current-news/type-2-diabetes-autoimmune-disease?demo1=default>
- ¹³⁸ Goldberg MS, Burnett RT, Yale JF, et al. Associations between ambient air pollution and daily mortality among persons with diabetes and cardiovascular disease. *Environ Res.* 2006;100:255–267; O'Neill MS, Veves A, Zanobetti A, et al. Diabetes enhances vulnerability to particulate air pollution-associated impairment in vascular reactivity and endothelial function. *Circulation.* 2005;111:2913–2920.
- ¹³⁹ Sun Q, Yue P, Deiluiis JA, et al. Ambient air pollution exaggerates adipose inflammation and insulin resistance in a mouse model of diet-induced obesity. *Circulation.* 2009;119:538–546.
- ¹⁴⁰ Meo SA, Memon AN, Sheikh SA, Rouq FA, Usmani AM, Hassan A, Arian SA. Effect of environmental air pollution on type 2 diabetes mellitus. *European review for medical and pharmacological sciences.* 2015;19:123–128.
- ¹⁴¹ Janghorbani M, Momeni F, Mansourian M. Systematic review and metaanalysis of air pollution exposure and risk of diabetes. *European journal of epidemiology.* 2014;29:231–242; Li C, Fang D, Xu D, et al. Main air pollutants and diabetes-associated mortality: a systematic review and meta-analysis. *European journal of endocrinology / European Federation of Endocrine Societies.* 2014;171:R183–190; Wang B, Xu D, Jing Z, Liu D, Yan S, Wang Y. Effect of long-term exposure to air pollution on type 2 diabetes mellitus risk: a systemic review and meta-analysis of cohort studies. *European journal of endocrinology / European Federation of Endocrine Societies.* 2014;171:R173–182; Chen H, Burnett RT, Kwong JC, et al. Risk of Incident Diabetes in Relation to Long-term Exposure to Fine Particulate Matter in Ontario, Canada. *Environmental Health Perspectives.* 2013;121(7):804–810.
- ¹⁴² Liu C, Yang C, Zhao Y, et al. Associations between long-term exposure to ambient particulate air pollution and type 2 diabetes prevalence, blood glucose and glycosylated hemoglobin levels in China. *Environment international.* 2016;92-93:416–421.
- ¹⁴³ Block, ML & Calderón-Garcidueñas, L. Air pollution: mechanisms of neuroinflammation and CNS disease. *Trends Neurosci.* 2009;32, 506–516.
- ¹⁴⁴ Allen J, Klocke C, Morris-Schaffer K, et al. Cognitive effects of air pollution exposures and potential mechanistic underpinnings. *Curr Envir Health Rpt.* 2017;4: 180–181; Costa LG, Cole TB, Coburn J, et al. Neurotoxicants Are in the Air: Convergence of Human, Animal, and In Vitro Studies on the Effects of Air Pollution on the Brain. *BioMed Research International.* 2014;7:36385.
- ¹⁴⁵ Power MC, Weisskopf MG, Alexeeff SE, et al. Traffic-related air pollution and cognitive function in a cohort of older men. *Environ Health Perspect* 2011: 119682–687.
- ¹⁴⁶ Weuve J, Puett RC, Schwartz J, Yanosky JD, Laden F, Grodstein F. Exposure to particulate air pollution and cognitive decline in older women. *Arch Intern Med.* 2012;172(3):219–227.
- ¹⁴⁷ Zanobetti A, Dominici F, Wang Y, Schwartz JD. A national case-crossover analysis of the short-term effect of PM_{2.5} on hospitalizations and mortality in subjects with diabetes and neurological disorders. 2014; *Environ Health* 13138.
- ¹⁴⁸ Hyewon Lee, Woojae Myung, Doh Kwan Kim. Short-term air pollution exposure aggravates Parkinson's disease in a population-based cohort. 2017. *Scientific Reports* 7, Article number: 44741.
- ¹⁴⁹ Kioumourtzoglou M-A, Schwartz JD, Weisskopf MG, et al. Long-term PM_{2.5} Exposure and Neurological Hospital Admissions in the Northeastern United States. *Environmental Health Perspectives.* 2016;124(1):23–29.
- ¹⁵⁰ Cacciottolo M, Wang X, Driscoll I, et al. Particulate air pollutants, APOE alleles and their contributions to cognitive impairment in older women and to amyloidogenesis in experimental models. *Translational Psychiatry.* 2017;7(1):e1022.
- ¹⁵¹ Cohen A, Brauer M, Burnett R, et al. Estimates and 25-year trends of the global burden of disease attributable to ambient air pollution: an analysis of data from the Global Burden of Disease study 2015. *The Lancet.* 2017 Apr.
- ¹⁵² Franklin M, Zeka A, Schwartz J. Association between PM_{2.5} and all-cause and specific-cause mortality in 27 US communities. *J Expo Sci Environ Epidemiol* 2007;17:279–287; Zanobetti A, Schwartz J. The effect of fine and coarse particulate air pollution on mortality: a national analysis. *Environ Health Perspect* 2009;117:898–903; Brook RD, Urch B, Dvornch JT, et al. Insights into the mechanisms and mediators of the effects of air pollution exposure on blood pressure and vascular function in healthy humans. *Hypertension* 2009;54:659–667; Yue W, Schneider A, Stölzel M, et al. Ambient source-specific particles are associated with prolonged repolarization and increased levels of inflammation in male coronary artery disease patients. *Mutat Res* 2007;621:50–60.
- ¹⁵³ Shi L, Zanobetti A, Kloog I, et al. Low-concentration PM_{2.5} and mortality: estimating acute and chronic effects in a population-based study. *Environ Health Perspect.* 2016; 124:46–52.
- ¹⁵⁴ McDonald JD, Zielinska B, Fujita EM, et al. Fine Particle and Gaseous Emission Rates from Residential Wood Combustion. *Environ Sci Tech* 2000 34:2080–2091; Naeher LP, Brauer M, Lipsett M, et al. Woodsmoke health effects: A review. *Inhal Toxicol* 2007 19:67–106; Kocbach Bølling A, Pagels J, Yttri KE, et al. Health effects of residential wood smoke particles: The importance of combustion conditions and physicochemical particle properties. *Part Fibre Toxicol* 2009 6:29.
- ¹⁵⁵ Bølling A, Pagels J, Yttri K, et al. Health effects of residential wood smoke particles: the importance of combustion conditions and physicochemical particle properties *Particle and Fibre Toxicology* 2009 6:29; Muala A, Rankin G, Sehlstedt M, et al. Acute exposure to wood smoke from incomplete combustion - indications of cytotoxicity. *Particle and Fibre Toxicology.* 2015;12:33.
- ¹⁵⁶ Grahame TJ, Klemm R, Schlesinger RB. Public health and components of particulate matter: the changing assessment of black carbon. *Journal*

THE GROWTH OF RECREATIONAL WOOD BURNING

- of the Air & Waste Mngt. Ass. 2014 Jun 3;64(6):620-60.
- ¹⁵⁷ Jalava PI, Salonen RO, Nuutinen K, et al. Effect of combustion condition on cytotoxic and inflammatory activity of residential wood combustion particles. *Atmos. Environ.* 2010;44:1691–98.
- ¹⁵⁸ Zou L, Zhang W, Atkiston S. The characterisation of polycyclic aromatic hydrocarbons emissions from burning of different firewood species in Australia. *Environmental Pollution* 2003; 124:2:283-289.
- ¹⁵⁹ Eriksson A, Nordin EZ, Nyström R, et al. Particulate PAH Emissions from Residential Biomass Combustion: Time-Resolved Analysis with Aerosol Mass Spectrometry *Environmental Science & Technology* 2014 48 (12), 7143-7150.
- ¹⁶⁰ Eriksson A, Nordin EZ, Nyström R, et al. Particulate PAH Emissions from Residential Biomass Combustion: Time-Resolved Analysis with Aerosol Mass Spectrometry *Environmental Science & Technology* 2014 48 (12), 7143-7150.
- ¹⁶¹ Morandi MT, Ward TJ. Risk Assessment Workgroup. Wood smoke risk assessment: defining the questions. *Inhal Toxicol.* 2010 Feb;22(2):94-8.
- ¹⁶² USEPA 2014 NEI Version 2.0. Office of Air Quality Planning and Standards Emissions Inventory and Analysis Group. February 2018. Available at <https://www.epa.gov/air-emissions-inventories/2014-national-emissions-inventory-nei-data>
- ¹⁶³ USEPA. EPA Fact Sheet: Overview of EPA's 2011 National Air Toxics Assessment. Available at <https://www.epa.gov/sites/production/files/2015-12/documents/2011-nata-fact-sheet.pdf>
- ¹⁶⁴ Black C, Gerriets J, Fontaine J. Early Life Wildfire Smoke Exposure is Associated with Immune Dysregulation and Lung Function Decrements in Adolescence. *Am J Respir Cell Mol Biol.* 2017 Feb 16.
- ¹⁶⁵ Gauderman W, Avol E, Gilliland F, et al. The effect of air pollution on lung development from 10 to 18 years of age. *N Engl J Med* 2004;351: 1057-1067; Gehring U, Gruzieva O, Agius RM, et al. Air pollution exposure and lung function in children: the ESCAPE project. *Environ Health Perspect* 2013; 121: 1357-1364; Urman R, McConnell R, Islam T, et al. Associations of children's lung function with ambient air pollution: joint effects of regional and near-roadway pollutants. *Thorax* 2014; 69: 540-547.
- ¹⁶⁶ Holstius et al. Birth Weight following Pregnancy during the 2003 Southern California Wildfires. 2012. <https://ehp.niehs.nih.gov/1104515>.
- ¹⁶⁷ Cândido da Silva et al. Low birth weight at term and the presence of fine particulate matter and carbon monoxide in the Brazilian Amazon: a population-based retrospective cohort study. 2014. <https://bmcpregnancychildbirth.biomedcentral.com/articles/10.1186/1471-2393-14-309>.
- ¹⁶⁸ Reid CE, Brauer M, Johnston FH, et al. Critical Review of Health Impacts of Wildfire Smoke Exposure. *Environmental Health Perspectives.* 2016;124(9):1334-1343.
- ¹⁶⁹ Koplitz S, Mickley L, Marlier M. Public health impacts of the severe haze in Equatorial Asia in September–October 2015: demonstration of a new framework for informing fire management strategies to reduce downwind smoke exposure. *Environmental Research Letters* 2016;11:9.
- ¹⁷⁰ Henderson SB, Brauer M, MacNab YC, Kennedy SM. Three measures of forest fire smoke exposure and their associations with respiratory and cardiovascular health outcomes in a population-based cohort. *Environmental Health Perspectives.* 2011;119(9):1266-1271; Yao J, Eyamie J, Henderson SB. Evaluation of a spatially resolved forest fire smoke model for population-based epidemiologic exposure assessment. *Journal of Exposure Science & Environmental Epidemiology.* 2016;26(3):233-240.
- ¹⁷¹ Johnston FH, Purdie S, Jalaludin B, et al. Air pollution events from forest fires and emergency department attendances in Sydney, Australia 1996–2007: a case-crossover analysis. *Environmental Health.* 2014;13:105; Rappold AG, Stone SL, Cascio WE, et al. Peat Bog Wildfire Smoke Exposure in Rural North Carolina Is Associated with Cardiopulmonary Emergency Department Visits Assessed through Syndromic Surveillance. *Environmental Health Perspectives.* 2011;119(10):1415-1420.
- ¹⁷² Arbex MA, Martins LC, de Oliveira RC, et al. Air pollution from biomass burning and asthma hospital admissions in a sugar cane plantation area in Brazil. *Journal of Epidemiology and Community Health.* 2007;61(5):395-400; Martin KL, Hanigan IC, Morgan GG, et al. Air pollution from bushfires and their association with hospital admissions in Sydney, Newcastle and Wollongong, Australia 1994-2007. *Aust N Z J Public Health.* 2013 Jun;37(3):238-43; Morgan G, Sheppard V, Khalaj B, et al. Effects of bushfire smoke on daily mortality and hospital admissions in Sydney, Australia. *Epidemiology.* 2010;21:47–55; Duclos P, Sanderson LM, Lipsett M. The 1987 forest fire disaster in California: assessment of emergency room visits. *Arch Environ Health.* 1990;45:53–8; Delfino RJ, Brummel S, Wu J, et al. The relationship of respiratory and cardiovascular hospital admissions to the southern California wildfires of 2003. *Occupational and environmental medicine.* 2009;66(3):189-197.
- ¹⁷³ <http://www.lung.org/stop-smoking/smoking-facts/whats-in-a-cigarette.html?referrer=https://www.google.com>
- ¹⁷⁴ Fowles J, Dybing E. Application of toxicological risk assessment principles to the chemical constituents of cigarette smoke. *Tobacco Control.* 2003;12(4):424–30.
- ¹⁷⁵ Australian Air Quality Group – Woodsmoke. Available at <http://woodsmoke.3sc.net/wood-vs-cigarette-smoke>. Accessed June 12, 2017.
- ¹⁷⁶ CDC. Health Effects of Secondhand Smoke. Available at https://www.cdc.gov/tobacco/data_statistics/fact_sheets/secondhand_smoke/health_effects; Accessed June 6, 2017.
- ¹⁷⁷ Grahame TJ, Klemm R, Schlesinger RB. Public health and components of particulate matter: the changing assessment of black carbon.

THE HARMFUL EFFECTS OF WOOD SMOKE AND

- Journal of the Air & Waste Management Association. 2014 Jun 3;64(6):620-60.
- ¹⁷⁸ Scheers H, Mwalili SM, Faes C, et al. Does Air Pollution Trigger Infant Mortality in Western Europe? A Case-Crossover Study. *Environmental Health Perspectives*. 2011;119(7):1017-1022.
- ¹⁷⁹ Kocbach A, Li Y, Yttri K.E., et al. Physicochemical characterisation of combustion particles from vehicle exhaust and residential wood smoke. *Part Fibre Toxicol* (2006) 3: 1.
- ¹⁸⁰ Danielsen PH, Loft S, Kocbach A, et al. Oxidative damage to DNA and repair induced by Norwegian wood smoke particles in human A549 and THP-1 cell lines. *Mutat Res*. 2009 Mar 31;674(1-2):116-22.
- ¹⁸¹ Taxell P, Santonen T. Diesel engine exhaust: basis for occupational exposure limit value. *Toxicol Sci*. 2017 Jun 15.
- ¹⁸² California EPA Air Resources Board. The Report on Diesel Exhaust. <https://www.arb.ca.gov/toxics/dieseltac/de-fnds.htm>
- ¹⁸³ Wilson S, Miller MR, Newby DE. Effects of Diesel Exhaust on Cardiovascular Function and Oxidative Stress. *Antioxid Redox Signal*. 2017 May 25.
- ¹⁸⁴ Wang G, Zhang R, Gomez ME, et al. Persistent sulfate formation from London Fog to Chinese haze. *Proceedings of the National Academy of Sciences of the United States of America*. 2016;113(48):13630-13635.
- ¹⁸⁵ WHO. Residential heating with wood and coal: health impacts and policy options in Europe and North America. 2015. Available at http://www.euro.who.int/__data/assets/pdf_file/0009/271836/ResidentialHeatingWoodCoalHealthImpacts.pdf. Accessed June 16, 2017.
- ¹⁸⁶ Noonan CW, Ward TJ, Semmens EO. Estimating the number of vulnerable people in the United States exposed to residential wood smoke *Environ Health Perspect*, 2015;123(2).p. A30.
- ¹⁸⁷ Boman BC, Forsberg AB, Järholm BG. Adverse health effects from ambient air pollution in relation to residential wood combustion in modern society. *Scand J Work Environ Health* 2003;29(4):251–260.
- ¹⁸⁸ Bateson T, Schwartz J. Children's response to air pollutants *J Toxicol Environ Health A*, 71 (3) (2008), pp. 238-243.
- ¹⁸⁹ WHO. Health effects of particulate matter. 2013. http://www.euro.who.int/__data/assets/pdf_file/0006/189051/Health-effects-of-particulate-matter-final-Eng.pdf. Accessed June 7, 2017.
- ¹⁹⁰ Li X, Huang S, Jiao A, et al. Association between ambient fine particulate matter and preterm birth or term low birth weight: An updated systematic review and meta-analysis. *Environ Pollut*. 2017 Aug;227:596-605.
- ¹⁹¹ Holstius et al. Birth Weight following Pregnancy during the 2003 Southern California Wildfires. 2012. <https://ehp.niehs.nih.gov/1104515>.
- ¹⁹² Cândido da Silva et al. Low birth weight at term and the presence of fine particulate matter and carbon monoxide in the Brazilian Amazon: a population-based retrospective cohort study. 2014. <https://bmcpregnancychildbirth.biomedcentral.com/articles/10.1186/1471-2393-14-309>.
- ¹⁹³ Rokoff LB, Koutrakis P, Garshick E et al. Wood Stove Pollution in the Developed World: A Case to Raise Awareness Among Pediatricians. *Curr Probl Pediatr Adolesc Health Care*. 2017 Jun;47(6):123-141.
- ¹⁹⁴ Lai HK, Berry SD, Verbiest MEA, et al. Emergency department visits of young children and long-term exposure to neighbourhood smoke from household heating – The Growing Up in New Zealand child cohort study. *Environ Pollut*. 2017 Dec;231(Pt 1):533-540.
- ¹⁹⁵ Karr CJ, Demers PA, Koehoorn MW, et al. Influence of ambient air pollutant sources on clinical encounters for infant bronchiolitis. *Am. J. Respir. Crit. Care Med*. 200. 180:995-1001.
- ¹⁹⁶ MacIntyre EA, Karr CJ, Koehoorn M, et al. Residential air pollution and otitis media during the first two years of life. *Epidemiology*. 2011;22:81-89.
- ¹⁹⁷ Allen RW, Mar T, Koenig J, et al. Changes in lung function and airway inflammation among asthmatic children residing in a woodsmoke-impacted urban area. *Inhal. Toxicol*. 2008;20:423-433.
- ¹⁹⁸ USEPA, Integrated Science Assessment for Particulate Matter, December 2009. EPA 600/R-08/139F.
- ¹⁹⁹ CDC. Heart Disease Facts. 2015. <https://www.cdc.gov/heartdisease/facts.htm>
- ²⁰⁰ Goldberg MS, Burnett RT, Yale JF, et al. Associations between ambient air pollution and daily mortality among persons with diabetes and cardiovascular disease. *Environ Res*. 2006;100:255–267; O'Neill MS, Veves A, Zanobetti A, et al. Diabetes enhances vulnerability to particulate air pollution-associated impairment in vascular reactivity and endothelial function. *Circulation*. 2005;111:2913–2920.
- ²⁰¹ CDC. Chronic Obstructive Pulmonary Disease Among Adults — United States, 2011 Weekly November 23, 2012 /61(46):938-943. https://www.cdc.gov/mmwr/preview/mmwrhtml/mm6146a2.htm?s_cid=mm6146a2_
- ²⁰² CDC. Asthma in the U.S. 2011. <https://www.cdc.gov/vitalsigns/asthma/index.html>
- ²⁰³ Population Reference Bureau. Population Bulletin. 2015. Vol. 70, No. 2. <http://www.prb.org/pdf16/aging-us-population-bulletin.pdf>
- ²⁰⁴ National Council on Aging. Top 10 Chronic Conditions in Adults 65+ and What You Can do to Prevent or Manage Them. 2017.
- ²⁰⁵ Gray JM, Rasanayagam S, Engel C, Rizzo J. State of the evidence 2017: an update on the connection between breast cancer and the environment. *Environmental Health*. 2017;16:94.
- ²⁰⁶ Hu H, Dailey AB, Kan H, Xu X. The effect of atmospheric particulate matter on survival of breast cancer among US females. *Breast Cancer*

THE GROWTH OF RECREATIONAL WOOD BURNING

- Res Treat. 2013 May;139(1):217-26.
- ²⁰⁷ Iwai K, Mizuno S, Miyasaka Y, et al. Correlation between suspended particles in the environmental air and causes of disease among inhabitants: cross-sectional studies using the vital statistics and air pollution data in Japan. *Environ Res* 2005;99:106–17; Tagliabue G, Borgini A, Tittarelli A, et al. Atmospheric fine particulate matter and breast cancer mortality: a population-based cohort study. *BMJ Open*. 2016;6(11); Hung L-J, Tsai S-S, Chen P-S, et al. Traffic air pollution and risk of death from breast cancer in Taiwan: fine particulate matter (PM2.5) as a proxy marker. *Aerosol Air Qual Res* 2012 12:275–282.
- ²⁰⁸ DeSantis CE, Ma J, Goding Sauer A, et al. Breast cancer statistics, 2017, racial disparity in mortality by state. *CA Cancer J Clin*. 2017 Nov;67(6):439-448.
- ²⁰⁹ Chafe Z, Brauer M, Héroux, M. Residential heating with wood and coal: health impacts and policy options in North America. WHO:2015.
- ²¹⁰ USEPA. Wood smoke awareness kit. Fast facts. https://www.epa.gov/sites/production/files/2016-11/documents/kit_2_fast_facts.pdf. Accessed June 27, 2017.
- ²¹¹ Thatcher TL, Kirchstetter TW, Malejan CJ, Ward CE. Infiltration of Black Carbon Particles from Residential Woodsmoke into Nearby Homes. *Open Journal of Air Pollution*. 2014 Dec 2;3(04):111.
- ²¹² Williams RD, Knibbs LD. Daily personal exposure to black carbon: a pilot study. *Atmospheric Environment*. 2016 May 31;132:296-9.
- ²¹³ Shi L, Zanobetti A, Kloog I, et al. 2016. Low-concentration PM2.5 and mortality: estimating acute and chronic effects in a population-based study. *Environ Health Perspect* 124:46–52.
- ²¹⁴ Ebelst ST, Wilson WE, Brauer M. Exposure to Ambient and Nonambient Components of Particulate Matter; *Epidem*. 2005, 16, 396-405; Koenig JQ, Mar TF, Allen RW., et al. Pulmonary Effects of Indoor- and Outdoor-Generated Particles in Children with Asthma; *Environ. Health Perspect*. 2005, 113, 499-503.
- ²¹⁵ US Energy Information Administration. Increase in wood as main source of household heating most notable in the Northeast. March 17, 2014.
- ²¹⁶ Ward T, Lange T. The impact of wood smoke on ambient PM2.5 in northern Rocky Mountain valley communities. *Environ Pollut*. 2010; 158(3):723-729.
- ²¹⁷ Ward T, Trost B, Conner J, et al. Source apportionment of PM2.5 in a subarctic airshed—Fairbanks, Alaska. *Aerosol Air Qual Res*, 12 (4) (2012), pp. 536-543.
- ²¹⁸ Chafe Z, Brauer M, Héroux M, et al. Residential heating with wood and coal: health impacts and policy options in Europe and North America. Copenhagen, Denmark, 2015.
- ²¹⁹ America Society of Landscape Architects. Asla Survey: Demand High For Sustainable, Tech-Friendly Residential Landscapes. 3/7/2017. Available at <https://www.asla.org/NewsReleaseDetails.aspx?id=50027>. Accessed June 13, 2017.
- ²²⁰ Thatcher et al. op. cit. <https://www.arb.ca.gov/research/rsc/10-28-11/item2dfr07-308.pdf>
- ²²¹ Johnson, P.R.S.; Graham, J.J. Analysis of Primary Fine Particle National Ambient Air Quality Standard Metrics; *J. Air & Waste. Manage. Assoc.* 2006, 56, 206-218.
- ²²² New York State Energy Research and Development Authority (NYSERDA): Spatial Modeling and Monitoring of Residential Woodsmoke Across a Non-Urban Upstate New York Region; Final Report 10-02; Albany, NY, 2010.
- ²²³ Shi L, Zanobetti A, Kloog I, et al. Low-concentration PM2.5 and mortality: estimating acute and chronic effects in a population-based study. *Environ Health Perspect* 2016:124:46–52.
- ²²⁴ <https://permittingservices.montgomerycountymd.gov/DPS/pdf/outdoorfire.pdf>
- ²²⁵ <https://www.portlandoregon.gov/fire/article/405003>
- ²²⁶ Open Burning Regulations, effective January 1, 2015. \$2105.50. http://www.achd.net/air/burning/Open_Burning_Regulation.pdf
- ²²⁷ <https://www.denvergov.org/content/denvergov/en/environmental-health/about-us/news-room/2016/BurnBan.html>. In 2014 the Boston City Council amended the Boston Fire Prevention Code by adding Article XXXIII of the Boston Fire Prevention Code concerning the use of Outdoor Cooking Appliances, Outdoor Patio and Space Heaters, Outdoor Decorative Appliances and Outdoor Fireplaces.
- ²²⁸ <https://ecology.wa.gov/Air-Climate/Air-quality/Smoke-fire>
- ²²⁹ <http://www.sparetheair.org>
- ²³⁰ <https://deq.utah.gov/legacy/compliance/air-quality/stationary-source/mandatory-no-burn-days.htm>
- ²³¹ American Lung Association. State of the Air 2017. <http://www.lung.org/assets/documents/healthy-air/state-of-the-air/state-of-the-air-2017.pdf>
- ²³² Hopey, D. Asthma at 'epidemic' levels in region's schools, experts say on World Asthma Day. *Pittsburg Post-Gazette*. <http://www.post-gazette.com/news/health/2017/05/03/World-Asthma-Day-2017-children-asthma/stories/201705030120>
- ²³³ Templeton D and Hopey D. *Pittsburgh Post Gazette*. "One of the Worst Areas." Dec 17 2010. <http://www.post-gazette.com/news/health/2010/12/17/One-of-the-worst-areas/stories/201012170177>

THE HARMFUL EFFECTS OF WOOD SMOKE AND

- ²³⁴ Voorhees, R. Be a Good Neighbor: Wood Smoke Hazards ACDH. http://www.achd.net/air/pubs/EcoCurrents/2012_July-Sept.pdf
- ²³⁵ The Pennsylvania Code. Open burning operations. <http://www.pacode.com/secure/data/025/chapter129/s129.14.html>
- ²³⁶ PA Chapter 137. Air Pollution Episodes. <https://www.pacode.com/secure/data/025/chapter137/chap137toc.html>
- ²³⁷ ACDH. Open Burning in Allegheny County. http://www.achd.net/air/burning/open_burning_in_allegheny_county_web.pdf
- ²³⁸ ACDH. Burn Facts. <http://www.achd.net/air/burning/wood.html>
- ²³⁹ Personal communication with Clean Air Council staff T. Brendlinger and C. Ahlers.
- ²⁴⁰ Simon M. How to Talk About Wood Smoke Pollution: A guide to negotiating with neighbors and creating compromise in your neighborhood. 2015. Available at https://iseesmokepa.files.wordpress.com/2015/05/wood-smoke-take-action-guide_final.pdf
- ²⁴¹ <http://gasp-pgh.org/wp-content/uploads/Burn-Barrel-fact-sheet1.pdf>
- ²⁴² Alliance for Green Heat. 2010 census shows wood is fastest growing heating fuel. Biomass Magazine. <http://biomassmagazine.com/articles/5849/2010-census-shows-wood-is-fastest-growing-heating-fuel>
- ²⁴³ Batt, S. Sources of home heating used by Connecticut households. 2014. <http://blogs.lib.uconn.edu/outsidetheheadline/2014/01/02/sources-of-home-heating-used-by-connecticut-households/>
- ²⁴⁴ CT DEEP. Asthma Rates. <http://www.ct.gov/dph/cwp/view.asp?a=3137&q=398480>
- ²⁴⁵ CT DPH. <http://www.ct.gov/dph/cwp/view.asp?a=3137&q=578396>
- ²⁴⁶ Kara, J. New Census estimates: Retirement-age population keeps growing. June 22, 2017. <https://trendct.org/2017/06/22/new-census-estimates-retirement-age-population-keeps-growing/>
- ²⁴⁷ CT DEEP. Campfires, Bonfires, Fire Pits, Chimineas and Other Similar Devices. http://www.ct.gov/deep/cwp/view.asp?a=2684&q=531300&deepNav_GID=1619
- ²⁴⁸ CT DEEP. Campfires, Bonfires, Fire Pits, Chimineas and Other Similar Devices. http://www.ct.gov/deep/cwp/view.asp?a=2684&q=531300&deepNav_GID=1619
- ²⁴⁹ CT DEEP. Open Burning on a Residential Piece of Property. Information on Restrictions, Conditions and Permitting. Available at http://www.ct.gov/deep/cwp/view.asp?a=2684&q=531238&deepNav_GID=1619
- ²⁵⁰ Thinking Of Purchasing An Outdoor Wood-Burning Furnace? http://www.ct.gov/deep/lib/deep/air/wood_stove_furnaces/dontchoke.pdf
- ²⁵¹ Capitman JA, Tyner RT. The Impacts of Short-term Changes in Air Quality on Emergency Room and Hospital Use in California's San Joaquin Valley. 2011, <https://www.fresnostate.edu/chhs/cvhipi/documents/aqr-web.pdf>. Meng Y.-Y., Rull R. P., Wilhelm M, Lombardi C, Balmes J, Ritz B. Outdoor air pollution and uncontrolled asthma in the San Joaquin Valley, California. *Journal of Epidemiology and Community Health*. 2010;64(2):142–147.
- ²⁵² San Joaquin Valley Unified Air Pollution Control District. Wood burning fireplaces and wood burning heaters. News Release of Rule 4901. 2003. Available at <https://www.valleyair.org/rules/currentrules/r4901.pdf>. Accessed October 2017.
- ²⁵³ Check before you burn. Residential wood burning rule 4901. <http://valleyair.org/rule4901/episodic-curtailements.htm>
- ²⁵⁴ FAQs about Residential Wood Burning, Rule 4901 and Check Before You Burn. <http://valleyair.org/rule4901/documents/FAQ-Rule4901.pdf>
- ²⁵⁵ Lighthall D, Nunes D, and Tyner T. Environmental Health Evaluation of Rule 4901: Domestic Wood Burning. Central Valley Health Policy Institute, California State University, Fresno.
- ²⁵⁶ Gilbreath S and Yap P. The Potential Impact of Residential Wood Burning Regulations in a California Region: Concurrent Wintertime Reductions in Ambient Pollution and Cardiovascular Mortality. *Epidemiology*. 2008;19(6) Suppl:S252.
- ²⁵⁷ Hospital admissions drop and air quality improves with fireplace, wood burning restrictions. <https://www.arb.ca.gov/newsrel/newsrelease.php?id=773>.
- ²⁵⁸ Yap P-S and Garcia C. Effectiveness of Residential Wood-Burning Regulation on Decreasing Particulate Matter Levels and Hospitalizations in the San Joaquin Valley Air Basin. *American Journal of Public Health*. 2015;105(4):772-778.
- ²⁵⁹ Di Q, Wang Y, Zanobetti A, et al. Air pollution and mortality in the Medicare population. *N. Engl. J. Med*. 2017;376:2513–2522.
- ²⁶⁰ The Health Consequences of Involuntary Smoking. <https://www.surgeongeneral.gov/library/reports/secondhandsmoke/fullreport.pdf>
- ²⁶¹ National Cancer Institute. Smoking and Tobacco Control Monograph No 11. Bethesda (MD): U.S. Department of Health and Human Services, National Institutes of Health, National Cancer Institute; 2000b. State and Local Legislative Action to Reduce Tobacco Use. NIH Publication No. 00-4804.
- ²⁶² Office on Smoking and Health. The Health Consequences of Involuntary Exposure to Tobacco Smoke: A Report of the Surgeon General. Atlanta: CDC; 2006. 10. Control of Secondhand Smoke Exposure.
- ²⁶³ American Non-Smokers' Rights Foundation. Overview List – How many Smokefree Laws? October 2, 2017. <http://www.pscleanair.org/2012chinook/>
- ²⁷⁴ US Department of Energy. Home Rx The Health Benefits of Home Performance – A Review of the Current Evidence. December 2016.

DESIGN & LAYOUT
BY JANE M. BRADLEY

Creative Advertising &
Publishing Services
West Hartford, CT 06107
(860) 232-7788
www.capservices.com



ENVIRONMENT & HUMAN HEALTH, INC.

1191 Ridge Road ■ North Haven, CT 06473

Phone (203) 248-6582 ■ info@ehhi.org

www.ehhi.org